



# READY-TO-RUN

## XXX-T SPORT Operation Guide

### Introduction

Thank you for choosing the Team Losi XXX-T Sport Truck. This is a highly developed R/C model that features a computer based radio system and Sensor Based Brushless Motor System. Although it is an entry-level model, it does require some mechanical experience and/or parental supervision. This guide contains the basic instructions for operating and maintaining your new XXX-T Sport. It is critical that you read all of the instructions in this and all accompanying manuals in order to operate your model correctly and avoid damage. Please take a moment to look them over before running the model. Your hobby dealer cannot, under any circumstances, accept a model for return or exchange that has been run.

### Safety Precautions

This is a sophisticated, high performance radio controlled model, which needs to be operated with caution and common sense. Failure to operate your model in a safe and responsible manner could result in personal and/or property damage. It is your responsibility to see that the instructions are followed and precautions adhered to. The XXX-T Sport is not intended for use by children without direct adult supervision. Team Losi, JR, Novak, Trinity and Horizon Hobby Inc. shall not be liable for any loss or damages, whether direct, indirect, special, incidental, or consequential, arising from use, misuse, or abuse of this product or any product required to operate it.

- Always follow the manufactures instructions for the battery, battery charger, radio and speed controller.
- The motor and battery pack will be hot during and after use. Avoid touching either of these until they are allowed to cool.
- It is normal for the battery pack to get slightly warm but not hot while charging. If it does become overheated, disconnect from the charger immediately and let it cool before use.
- Always operate your model in an open area away from cars and people to avoid the potential of injury or damage
- This model is controlled by a radio signal that is subject to interference from sources outside your control. This can cause temporary loss of control so it is advisable to always keep a safety margin in all directions to avoid collisions.
- Never operate your model in standing water or wet conditions as loss of control and damage to the electronics can occur.

### Service Information

JR Radio Gear (Radio/Receiver/Servos) - (877) 504-0233 Horizon Hobby Customer Service  
 Novak Brushless System (Speedo/Motor) - (949) 833-8873 Novak Customer Service  
 Chassis (Anything not electric) - (909) 390-9595 Team Losi Customer Service

## Required Equipment

You will need the following items to operate your new XXX-T Sport truck.

- 8 each "AA" size Alkaline batteries for the transmitter • 7.2 volt rechargeable Ni-Cad battery pack.
- Charger for Ni-Cad batteries.

## Tools You Will Find Handy

In addition to the small tools supplied with this model you will find the following most useful • Needle nose pliers • Hobby knife • Small screw driver • Quality 1/16", and 3/32" hex (Allen) drivers.

## Normal Service, Cleaning, and Adjustments

**Cleaning:** Performance can be hindered if dirt gets in any of the moving suspension parts. Use compressed air, a soft paintbrush and/or toothbrush to remove dust or dirt. Avoid using solvents as this can actually wash dirt into the bearings and areas not accessible without disassembly.



**The Shocks** will need to be serviced when the fluid gets low or dirty. After removing the shocks, unscrew the black plastic cartridge, dump out the fluid and clean thoroughly. Refill with Team Losi certified shock fluid (the model is supplied with 30 weight). Refer to the owners guide for proper filling and bleeding procedure. If the shocks leak fluid around the shaft it is time to replace the cartridges.

**The Differential** should be serviced when the diff action becomes extremely gritty feeling. After disassembly, clean (or replace if necessary) the balls and drive rings then re-lube with Team Losi diff lube (LOSA3065). Complete assembly instructions are available in the enclosed owners manual.

**Differential Adjustment:** The differential should be adjusted prior to the first use out of the box (or after a rebuild/service) and then again after several battery packs have been run. After this initial break-in period it is only necessary to check it after every hour of operation.

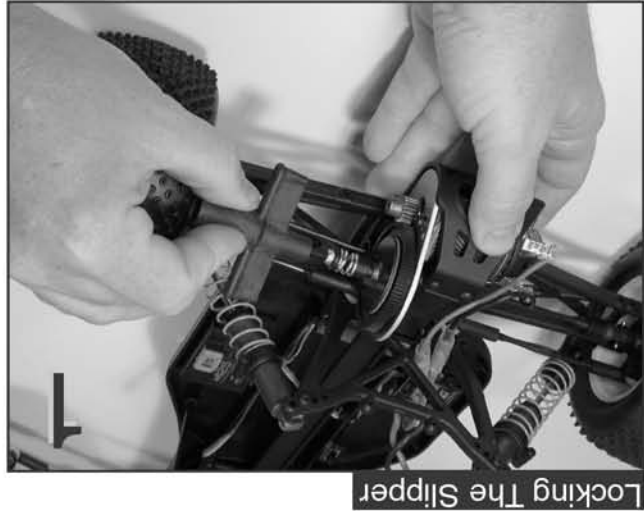
## Warranty and Technical Information

This model and the electronics in it have been factory assembled and thoroughly checked at the time of shipment and as such is only warranted against original factory defects in materials and/or workmanship. Under no circumstances will any of the electronics be considered under warranty that have been disassembled or any part of the model that has been used for a purpose or in a fashion other than it was originally intended or designed.

## Trouble Shooting Guide

- \***Short run time:** Battery not charged or Bad. Adjust diff or Slipper if slipping.
- \***Sluggish Acceleration:** Possible bind in drivetrain. Transmission should spin freely as well as front and rear wheels.
- \***Motor/ESC not responding:** Refer to Novak Electronic Instruction guide included in this kit.
- \***Doesn't Operate:** Check that Transmitter is on, batteries are good. Check if the ESC is in the "ON" position and Battery is plugged in.
- \***Poor run time:** Check that battery pack is fully charged. Adjust Diff or Slipper is slipping excessively. Check condition of battery pack.
- \***Poor range or "Glitching":** Check for low transmitter power, loose transmitter antenna, broken/cut receiver antenna wire or loose plugs and wires.

# CHECKING/ADJUSTING THE DIFF



Locking The Slipper

Turn the 1/4" slipper nut clockwise (about 4 full turns) to lock up the slipper.



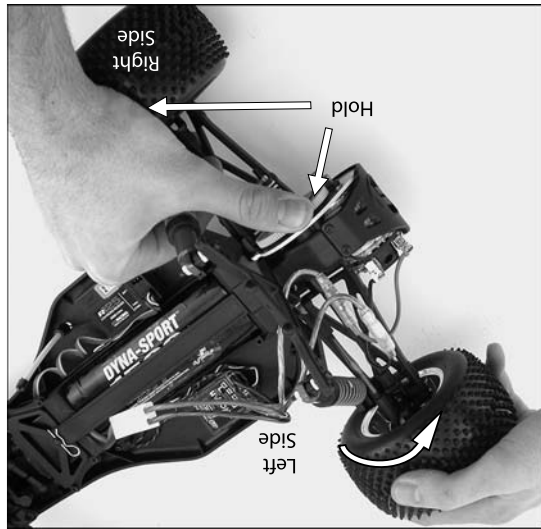
Line Up Slots In Diff Screw & Outdrive

Line-up the slot in the diff screw with the slots in the outdrive - (the shock & drive shaft have been removed for photos).



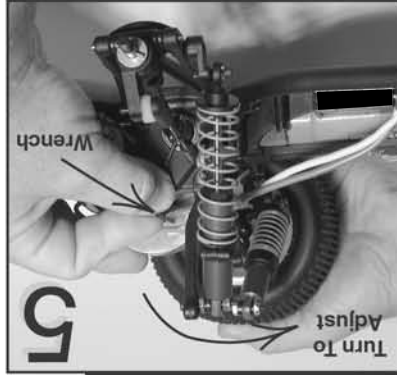
Locking The Diff Screw And Outdrive for Adjusting

Insert 1/16" allen wrench thru slots in outdrive & diff screw to lock together.



Checking The Diff

After locking the slipper try turning the left rear tire toward the back of the truck while holding the right rear tire and spur gear.



Tighten The Rear Diff

With the diff screw & outdrive locked together with the 1/16" allen wrench tighten (about the same as a top on a jar) by

turning the right tire toward the front of the car.

## Checking/Adjusting the Diff (see photos on back of "Getting Started")

**Step 1/Photo 1&2)** After removing the gear cover, turn the 1/4" slipper nut clockwise (about 4 full turns) to lock up the slipper. Use your left thumb to hold the spur gear while holding the right side rear tire firmly to the work surface. Now try to turn the left side tire toward the back of the model. It should be very difficult to turn. If not, the diff needs to be adjusted tighter. **Step 2/Photo 3)** locate the slot of the diff adjustment screw in the left side outdrive. This is done by holding the left rear wheel while turning the right tire. **Step 3/Photo 4)** Insert the long side of the 1/16" Allen wrench (included in the accessory bag) through the slot of the outdrive and diff screw so they are locked together. **Step 4/Photo 5)** While holding the 1/16" Allen wrench in the lid of a jar. **Step 5)** Recheck the diff and tighten again if necessary. Loosen the 1/4" slipper nut 4 turns and replace the gear cover before operating.



# Getting Started

**NOTE:** Before you start running your XXX-T Sport, you should check the differential and read completely through the operating instructions.

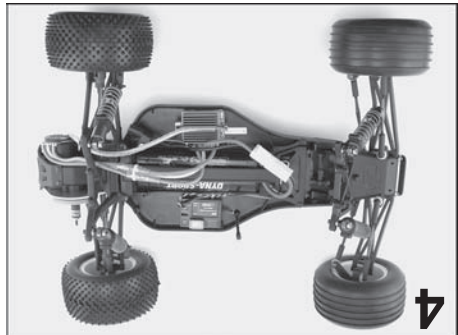


Charging the battery



Transmitter Battery Installation

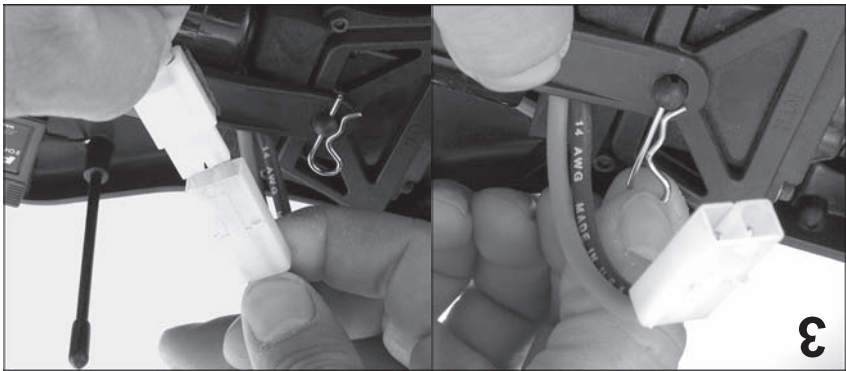
Install the 8 "AA batteries into the battery holder and put in the bottom of the transmitter.



XXX-T Sport Completed

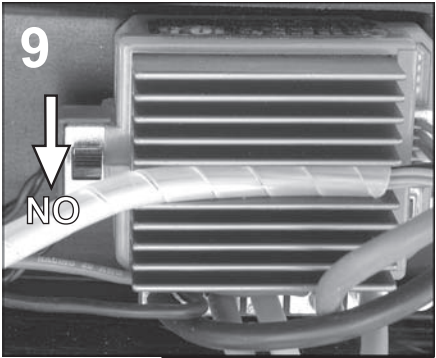
This is what your XXX-T Sport should look like when it is ready to run.

Hook up your charger to the necessary power source per the charger instructions. Before charging a new battery pack for the first time, follow the charger instructions to "discharge" the pack to prevent overcharging. When connecting the battery pack to the charger, note that the plugs are made so that they can only be plugged in one way. Start your battery pack charging. While the battery is charging, install the antenna tube as noted in Step 24 Figure 63 page 28 of your owners guide.



Battery Pack Installation & Plug-In Procedure

Install the battery pack into the car with the wires towards the front. Note the tab on the battery strap that goes behind the front. Secure with clips at front. Note the the edge of pack. Secure with clips at front. Note the the plugs are made so they can only be plugged in one way.



Operations Check

Switch on the truck and check for correct operation before running. **NOTE: The speed controller is preprogrammed and ready to use.**



Radio Transmitter

Turn on the transmitter and check the display for adequate power.

**NOTE:** When done running your truck, **ALWAYS** make sure to shut off the truck first, then the transmitter.