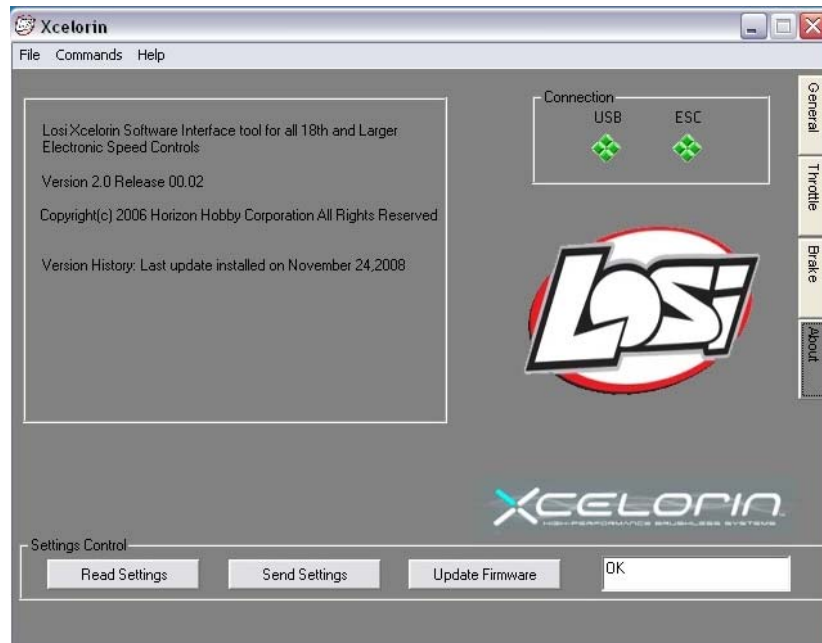


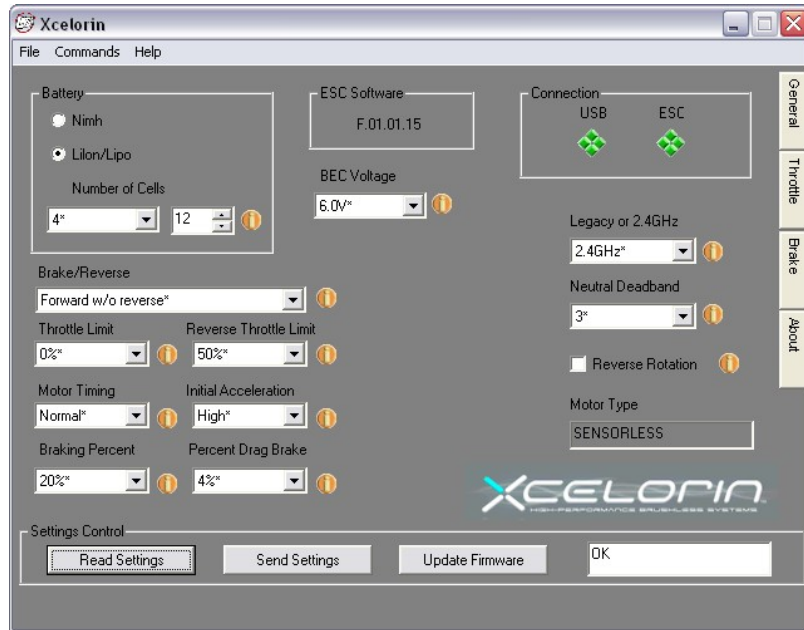


## Upgrade to Version 2.0 of the Xcelorin™ Setup Program and your LOSB9516 Sensorless 1/8 Scale ESC

1. This process will reset all parameters to stock default settings. Please write down your entire special configuration settings before proceeding.
2. De-Install the current Xcelorin Setup Program (if installed). Use Add/Remove Programs option from within the Control Panel to remove the Old Version of the Losi Setup Program. Then install the NEW Setup Program just downloaded.
3. Confirm Version 2.0 is installed by Opening the Xcelorin Setup Program and going to the ABOUT tab.

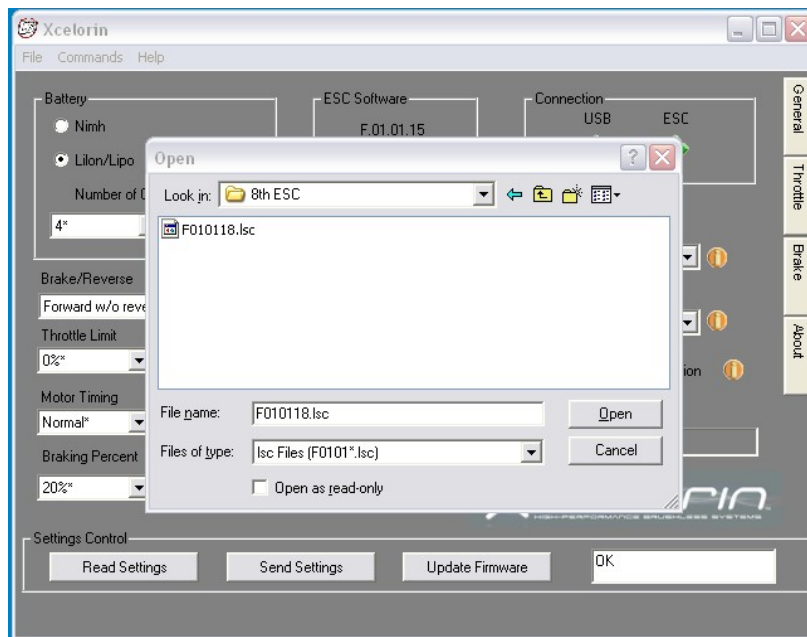


4. Connect your current 8<sup>th</sup> SENSORLESS ESC to the USB Connector per the Manual.

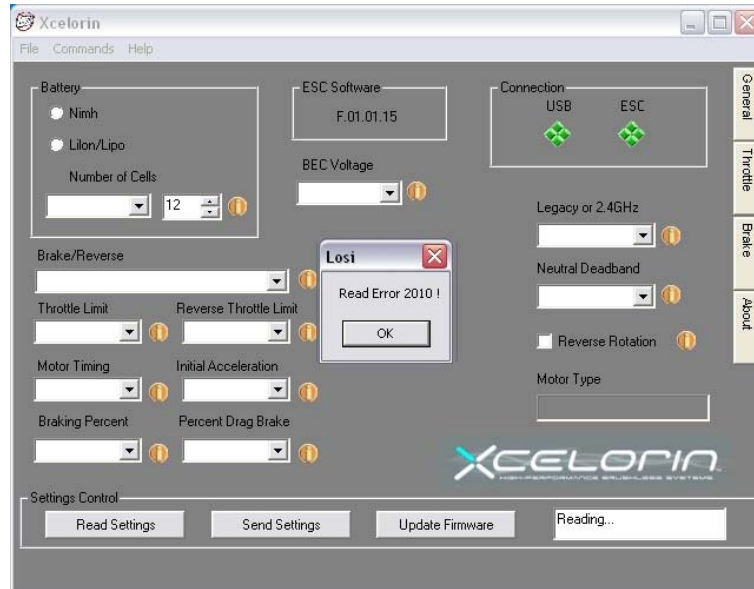


5. Download the new firmware F010118.LSC and save it in a location to be used in the next step. The previous version is F.01.10.15 as shown above.
6. Select / Click on "Update Firmware", you will then be prompted for the location of the new firmware file. F010118.LSC

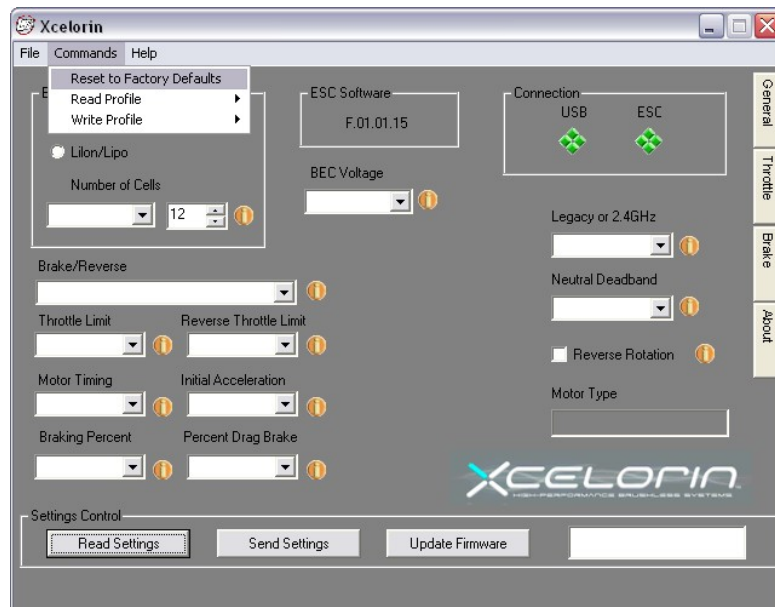
**Note:** If F010118.LSC does not display then replace \*.lsc with \*.\* which will display all the files in the selected folder. You will need to actually enter \*.\* over top of \*.LSC in the File name box.



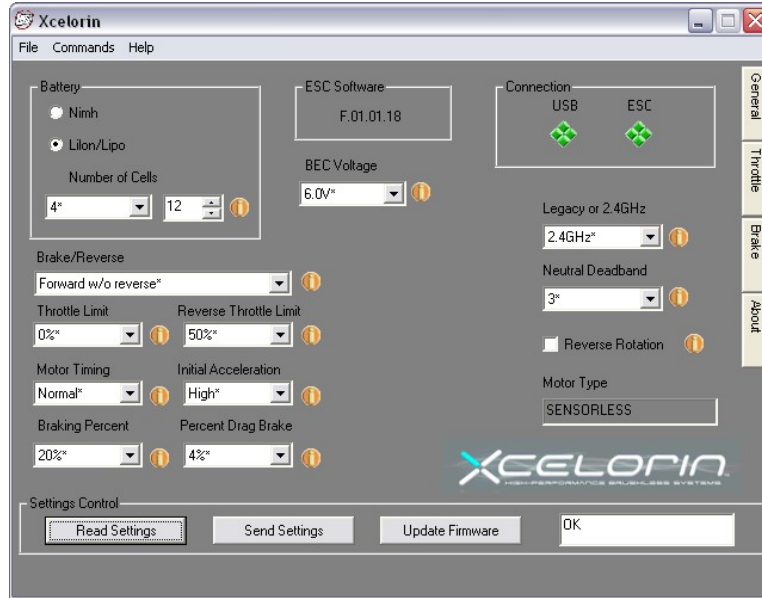
7. Select the F010118.LSC file and click on Open to begin the Update process. Do not disconnect the ESC during this process or it may become unusable.
8. When the update is complete, the Setup Software will attempt to READ the current settings. This may result in an ERROR 2010 message, do not worry and simply press the "OK" button. (There are several different error codes possible.)



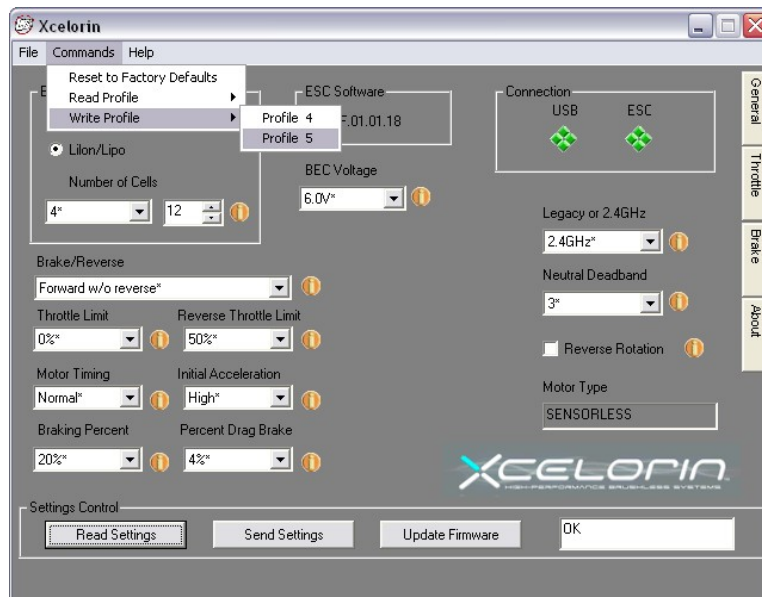
9. Note there may be several empty fields. It is necessary to "Restore to the Default Factory Settings" by selecting the "Commands" function, and then click on Restore Factory Defaults.



10. After this process completes, select the “Read Settings” button. If you experience any error doing this, disconnect the USB connection to the ESC and close the Setup Program. Then Reopen the Setup Program and reconnect the ESC to proceed. The ESC Software should now display F.01.01.18 as below.



11. A new feature is now available—there are now two profiles you can Read and Write to with the Setup Program. These can be selected at the track using the Setup Button (explained at the end of these instructions).



## **What has changed in this release?**

There have been general enhancements made in this release. The two largest are changing the Braking function and feel.

The Brake function has a more linear feel now. You can go all the way to full brake and slightly release and then go back to full brake without issue.

Many racers had previously used the Brake setting of 10% and still turned down the amount of braking. With this new version, you will most likely use a higher percentage. Most of the team is using the default of 20% and a few even use 30%.

The Brakes and Drag brakes no longer have a different feel depending on speed.

**We will continually improve this ESC firmware so check the Xcelorin Support website frequently.**

**<http://www.losi.com/Support/XcelorinDownloads.aspx>**

## To select the different profiles without PC Software:

Did you know that you can Write to Profile 4 and 5? Then using the steps below, you can retrieve them into the active profile at the track.

1. Turn the Transmitter on.
2. Turn the vehicle on.
3. With the ESC turned on and ready for operation, press and hold the setup button until both the Yellow and Blue LEDs turn on.
4. Release setup button.
5. The status LEDs flash to indicate the current profile setting.

LED status for each Profile below:

Profile 1 Yellow and Blue LEDs flash

Profile 2 Yellow, Blue and Green LEDs flash

Profile 3 Yellow, Blue, Green and Red LEDs Flash

**Profile 4 Red and Blue LEDs flash**

**Profile 5 Yellow and Green LEDs flashing quickly**

6. To make a change, quickly press the setup button, which will advance you to the next profile.
7. When you are finished, press and hold the setup button for 2 seconds. The four status LEDs will scroll and the new selection will be stored to the active memory of the ESC.
8. If you do not press the setup button within 15 seconds, the four status LEDs will scroll to indicate you are exiting programming. The ESC will then return to neutral and be ready for use without any change.