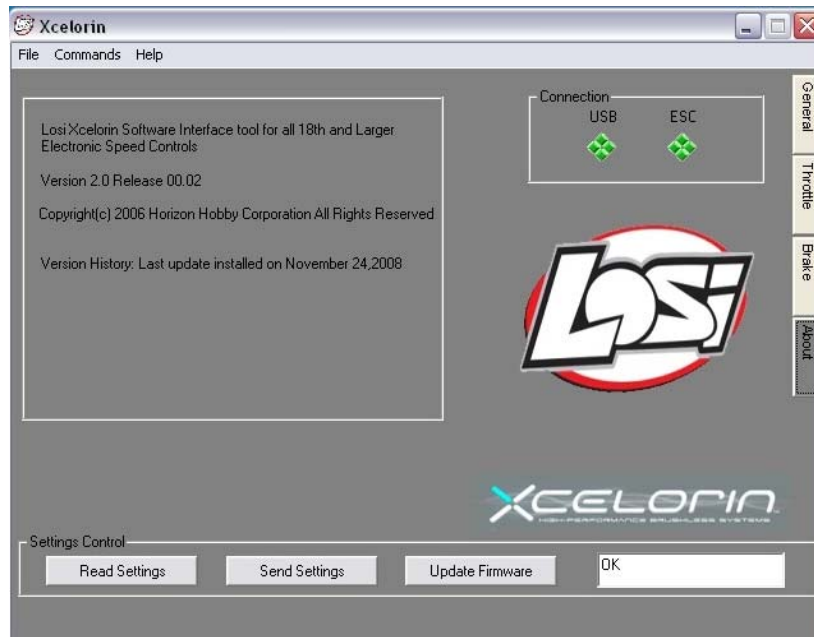




Upgrade to Version 2.0 of the Xcelorin™ Setup Program and your LOSB9500 Sensored ESC

1. This process will reset all parameters to stock default settings. Please write down your entire special configuration settings before proceeding.
2. De-Install the current Xcelorin Setup Program (if installed). Use Add/Remove Programs option from within the Control Panel to remove the Old Version of the Losi Setup Program. Then install the NEW Setup Program just downloaded.
3. Confirm Version 2.0 is installed by Opening the Xcelorin Setup Program and going to the ABOUT tab.

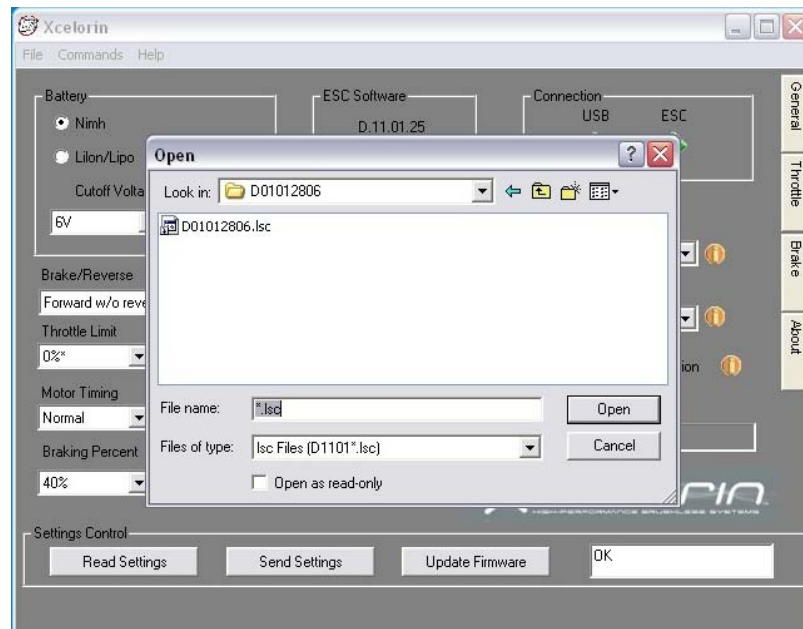


4. Connect your current 10th SENSORED ESC to the USB Connector per the Manual.

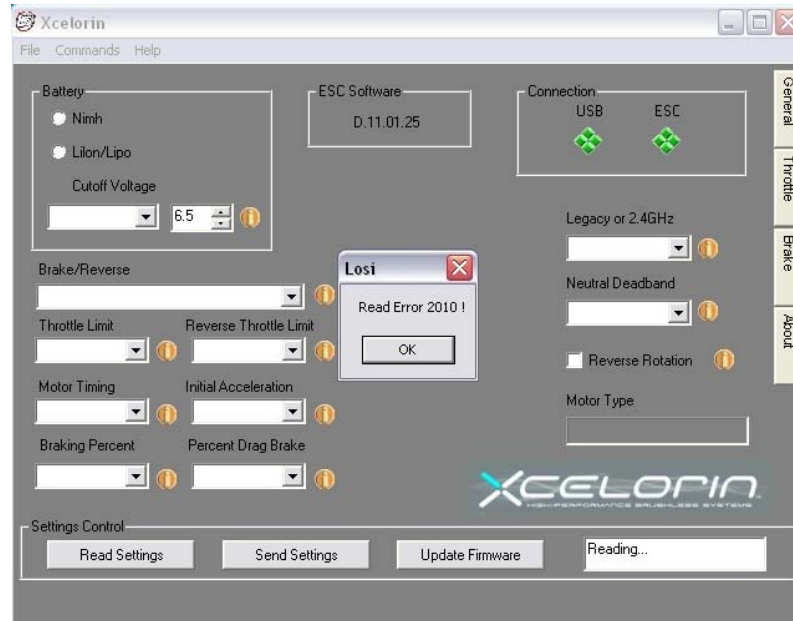


5. Download the new firmware D01012806.LSC and save it in a location to be used in the next step.
6. Select / Click on "Update Firmware"; you will then be prompted for the location of the new firmware file. D01012806.LSC

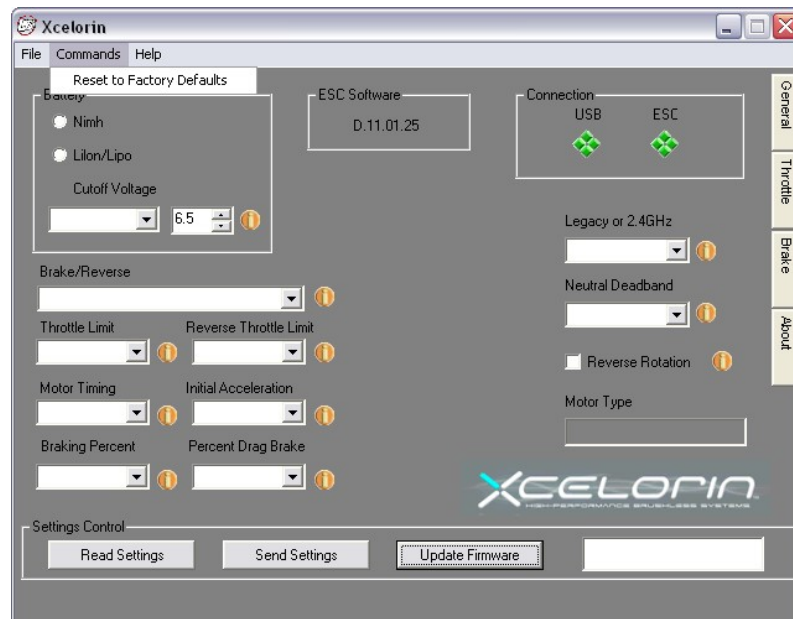
Note: If D01012806.LSC does not display then replace *.lsc with *.* which will display all the files in the selected folder. You will need to actually enter *.* over top of *.LSC in the File name box.



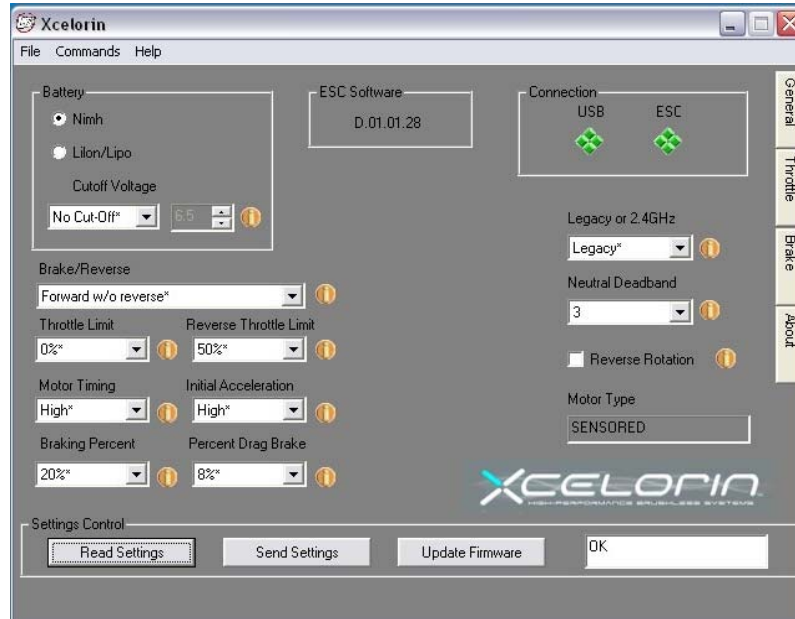
7. Select the D01012806.LSC file and click on Open to begin the Update process. Do not disconnect the ESC during this process or it may become unusable.
8. When the update is complete, the Setup Software will attempt to READ the current settings. This may result in an ERROR 2010 message do not worry and simply press the "OK" button. (There are several different error codes possible)



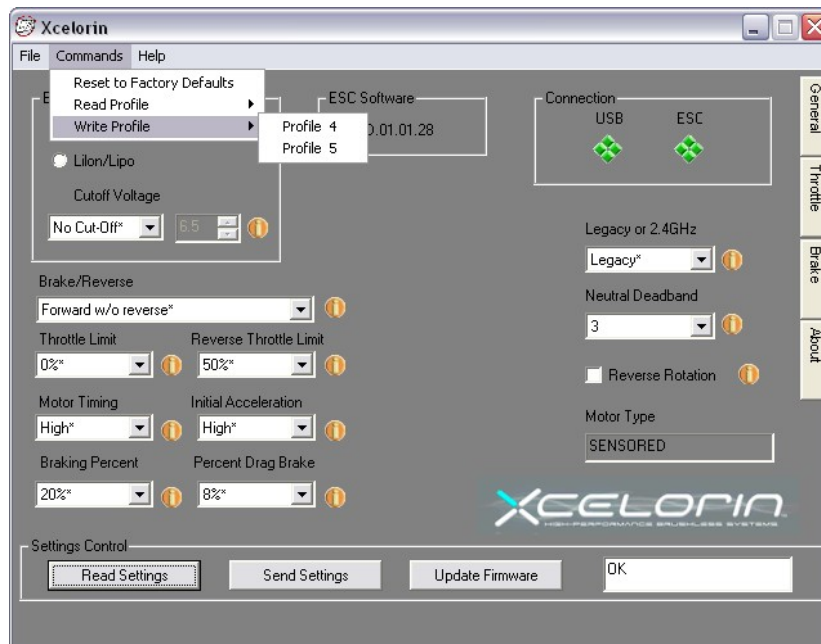
9. Note there maybe several empty fields. It is necessary to "Restore to the Default Factory Settings" by selecting the "Commands" function and then click on Restore Factory Defaults.



10. After this process completes select the "Read Settings" button. If you experience any error doing this disconnect the USB connection to the ESC and close the Setup Program. Then Reopen the Setup Program and reconnect the ESC to proceed. The ESC Software should now display D.01.01.28 as below.



11. A new feature is now available there are now two profiles you can Read and Write to with the Setup Program. These can be selected at the track using the Setup Button (explained at the end of these instructions).



What has changed in this release?

There have been general enhancements made in this release. The two largest are changing the Braking function and feel, and then adding of the User Controlled Profiles.

The Brake function now has a more linear feel. You can go all the way to full brake slightly release and then go back to full brake without issue.

The brakes will now work when you turn the ESC on before you had to use some throttle before they were active.

You can double, triple, or more the brakes without them dropping out.

Many racers had previously used the Brake setting of 20% to 30%. With this new version, you will most likely use a much higher percentage. The team suggests using 70 to 80% and then back down the brakes on the transmitter.

You can now use the End Point Adjustment to control the amount of braking.

For example in my 2 wheel buggy 13.5T I set the brakes to 80% (Maximum) but had to change my EP to 40% for proper braking. Alternatively, I could have used 50% and had the EP set to 70-80%. I mention this only so you might be able to better adjust your brakes more quickly to your desired feel.

The Brakes and Drag brakes no longer have a different feel depending on speed.

Low Voltage Cut off routine has been modified to be less sensitive to short voltage drops, which caused it to activate before the LiPo was low.

We will continually improve this ESC firmware so check the Xcelorin Support website frequently.

<http://www.losi.com/Support/XcelorinDownloads.aspx>

To select the different profiles without PC Software:

Did you know that you can Write to Profile 4 and 5? Then using the steps below retrieve them into the active profile at the track

1. Turn the Transmitter on.
2. Turn the vehicle on.
3. With the ESC turned on and ready for operation press and hold the setup button until both the Yellow and Blue LEDs turn on.
4. Release setup button.
5. The status LEDs flash to indicate the current profile setting.

LED status for each Profile below:

Profile 1 Yellow and Blue LEDs flash

Profile 2 Yellow, Blue and Green LEDs flash

Profile 3 Yellow, Blue, Green and Red LEDs Flash

Profile 4 Red and Blue LEDs flash

Profile 5 Yellow and Green LEDs flashing quickly

6. To make a change, quickly press the setup button, which will advance you to the next profile.
7. When you are finished, press and hold the setup button for 2 seconds the four status LEDs will scroll and the new selection will be stored to the active memory of the ESC.
8. If you do not press the setup button within 15 seconds, the four status LEDs will scroll to indicate you are exiting programming. The ESC will return to neutral and be ready for use without any change.