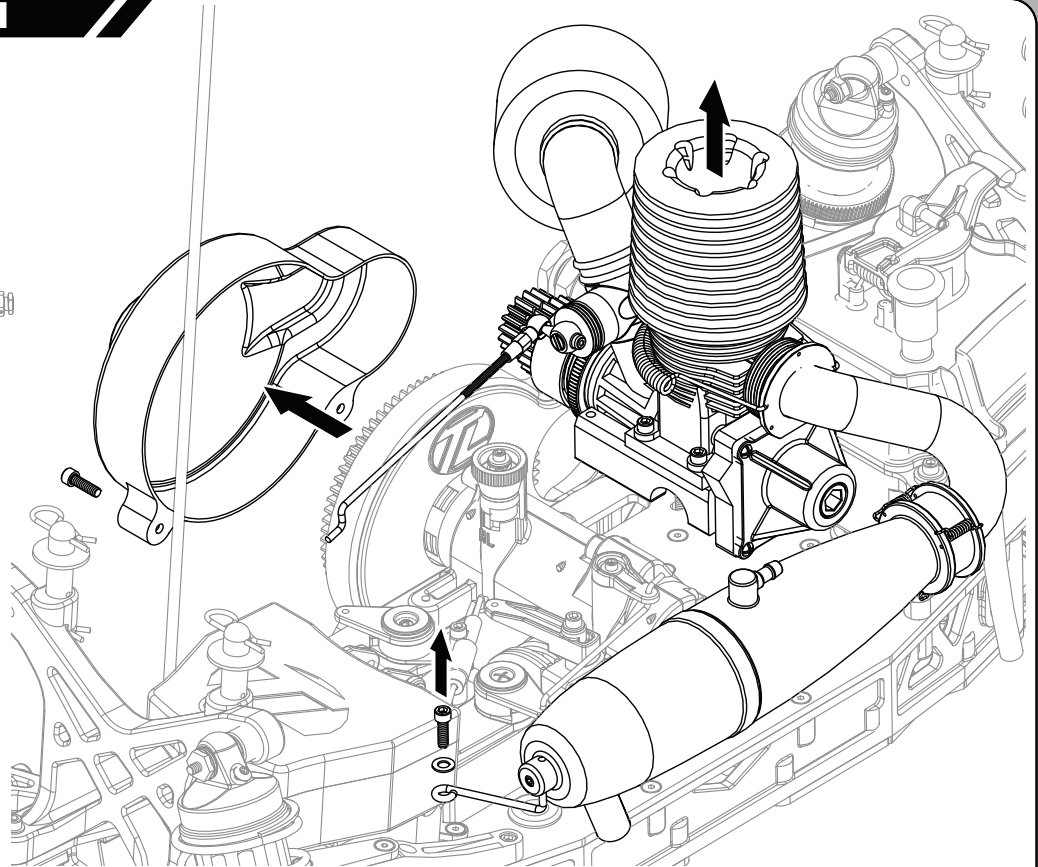
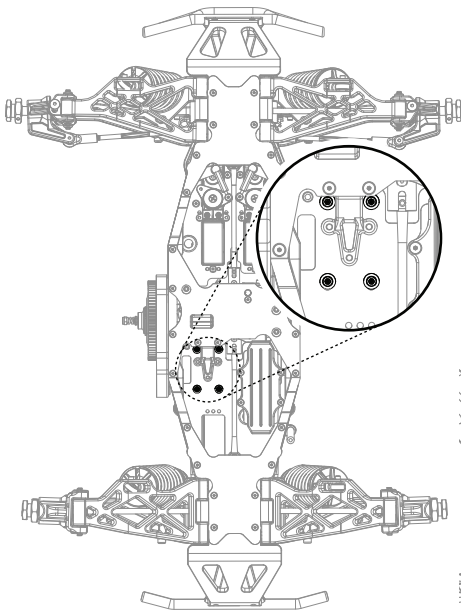


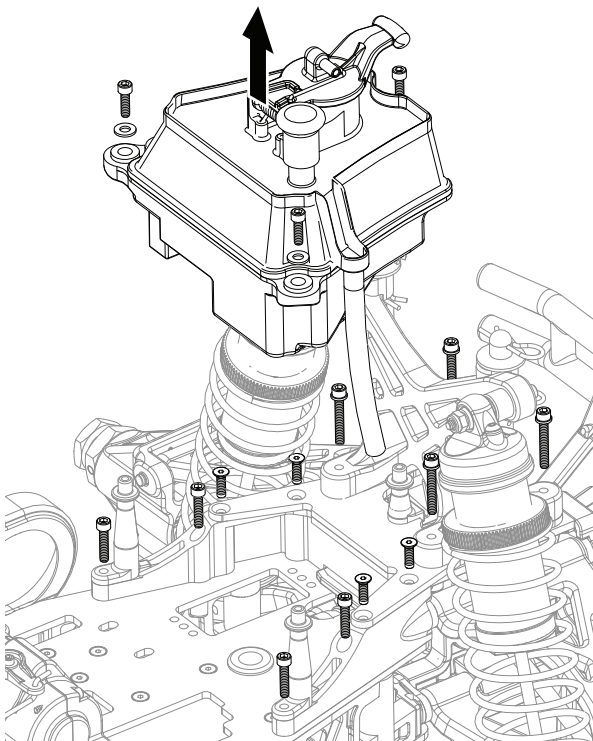


LST Series Electric Conversion Kit (LOSB0017)

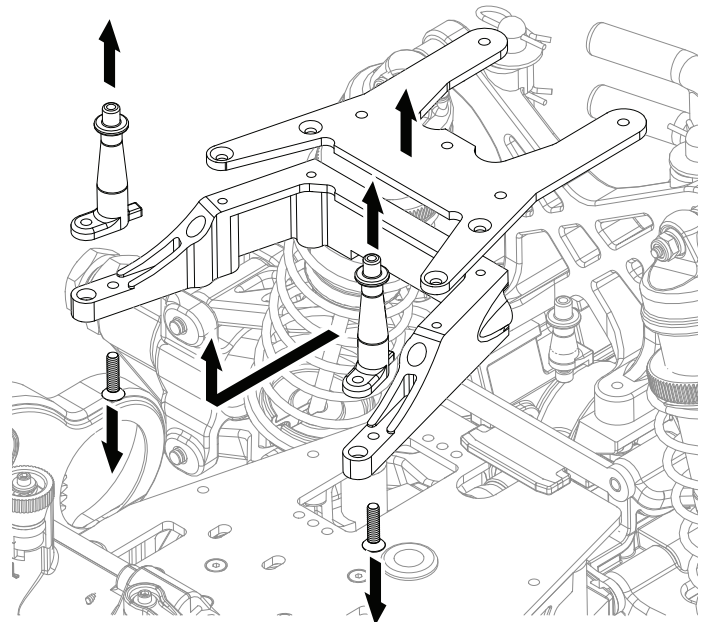
01 - Engine Removal



02 - Fuel Tank Removal



03 - Brace Removal

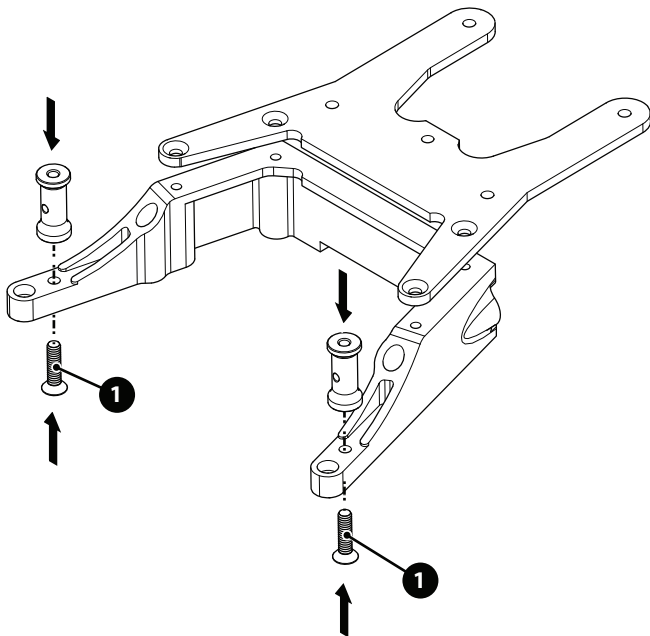






LST Series Electric Conversion Kit (LOSB0017)

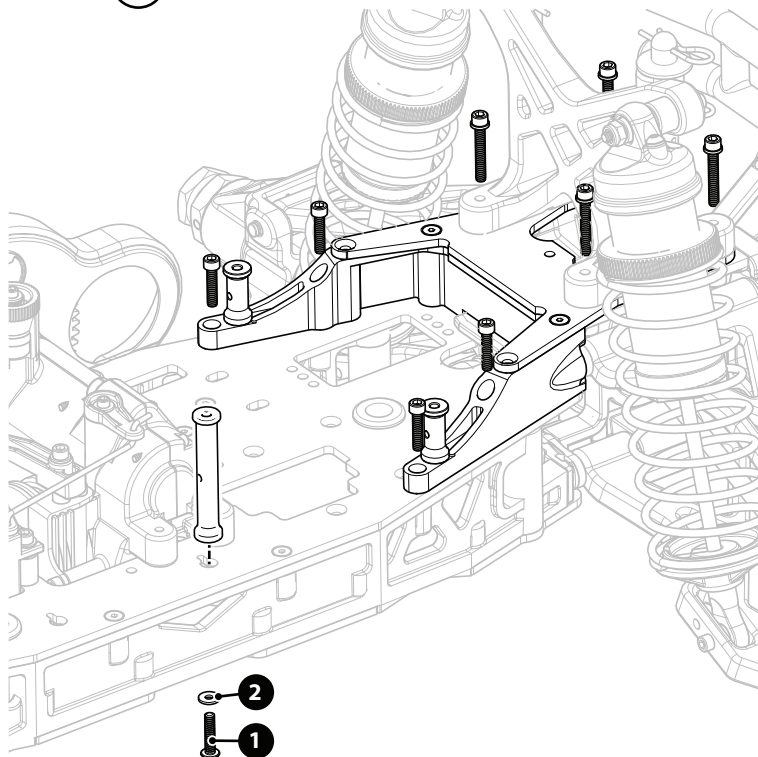
04 - Brace Sub-Assembly

- 1 2x  LOSA6210 #4-40 x 3/8" Flat Head Screw

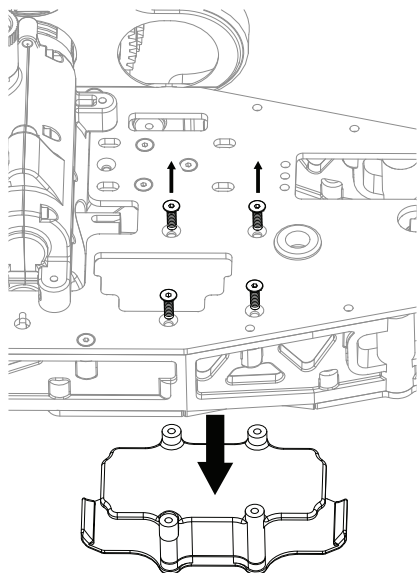


05 - Brace Installation

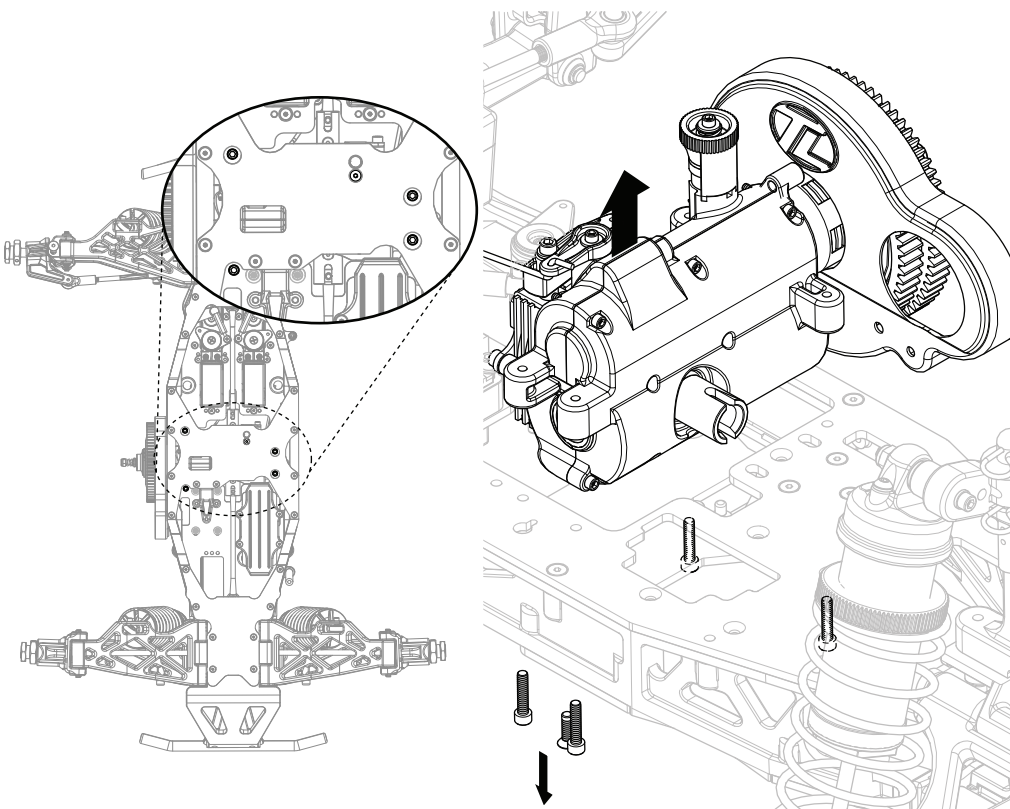
- 1 1x  LOSA6256 #4-40 x 1/2" Button Head Screw
2 1x  LOSA6215 #4 x .030 Flat Washer



06 - Receiver Battery Tray Removal



07 - Transmission Removal

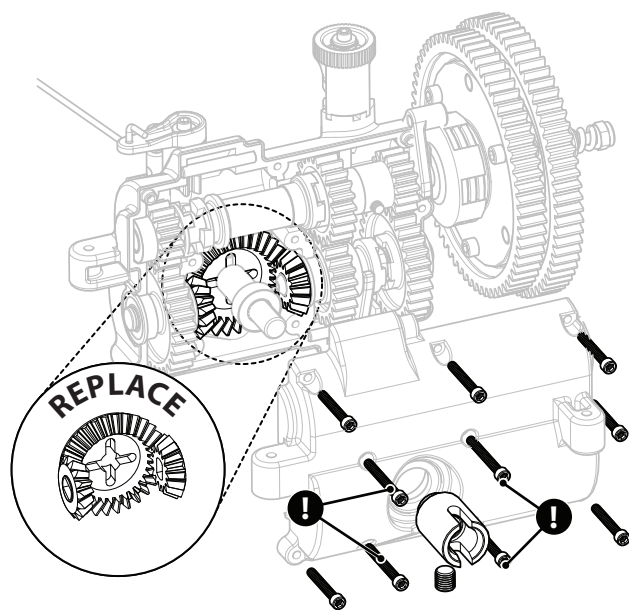




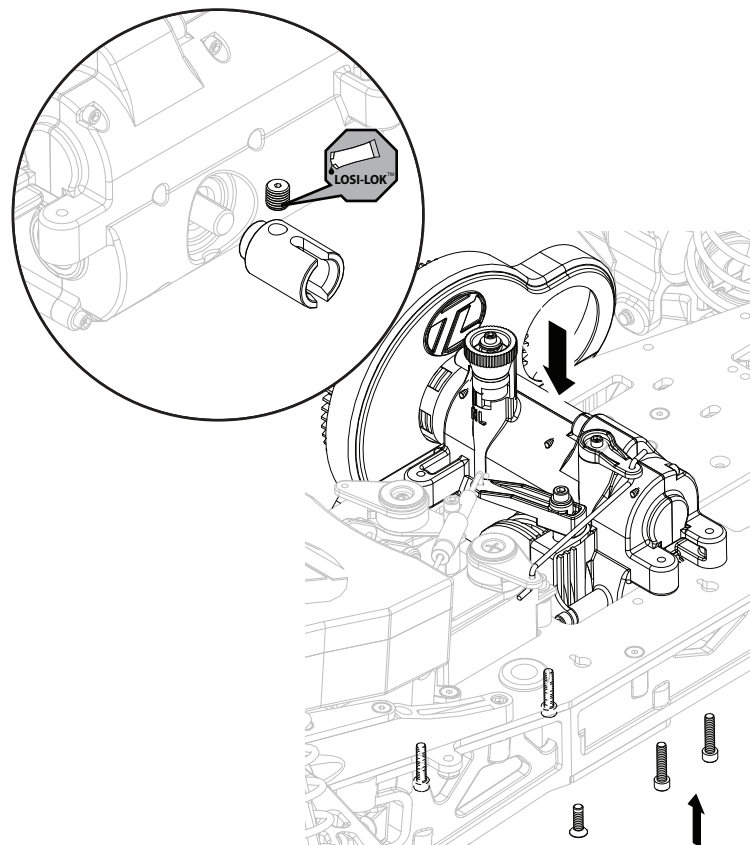
LST Series Electric Conversion Kit (LOSB0017)

08 - Install New Gears




! These screws are longer.



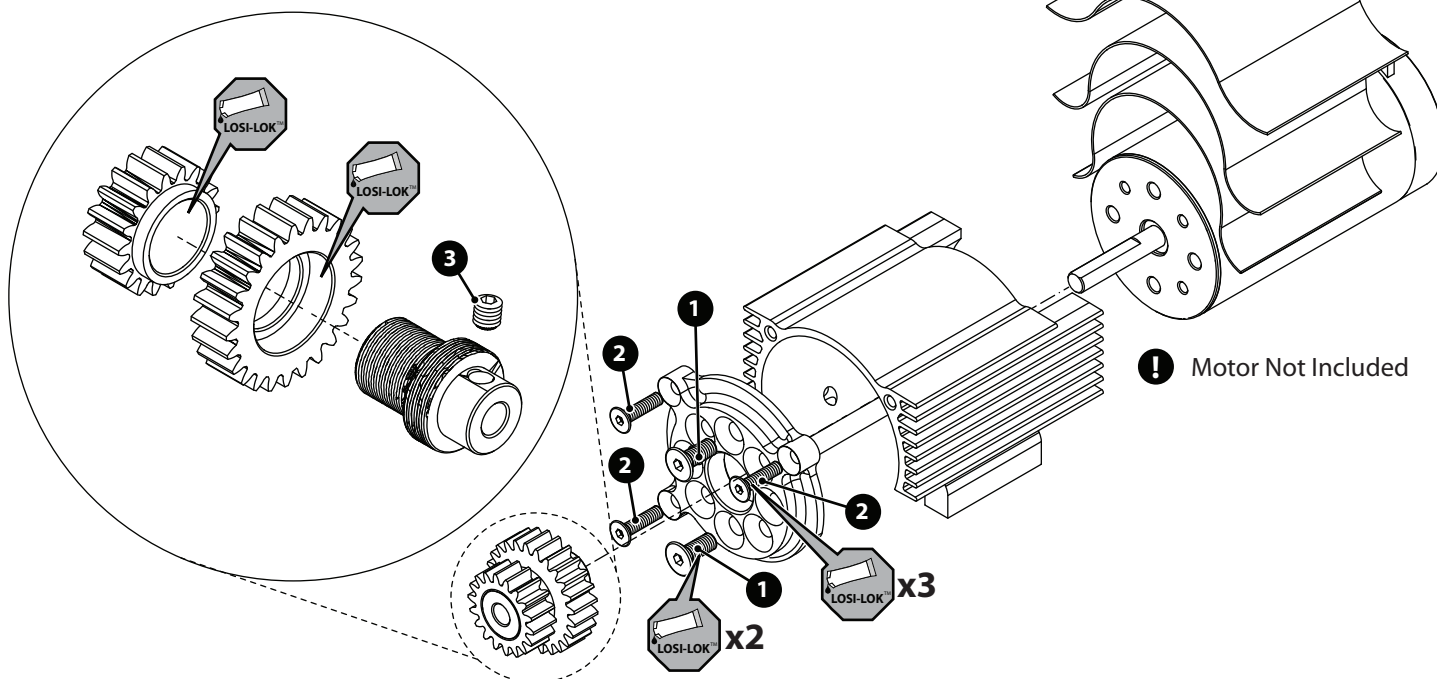
09 - Transmission Install



10 - Motor Assembly

- 1 2x  **LOSA6292** 4 x 10mm Flat Head Screw
- 2 3x  **LOSA6271** #5-40 x 1/2" Flat Head Screw
- 3 1x  **LOSA6250** 4 x 4mm Set Screw

! Use sheets as necessary.




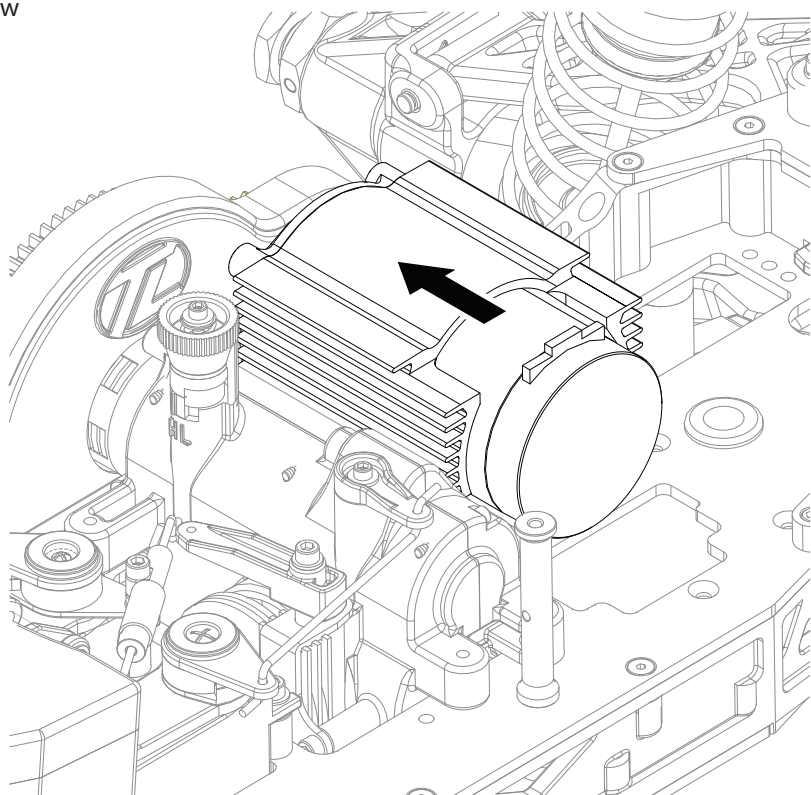
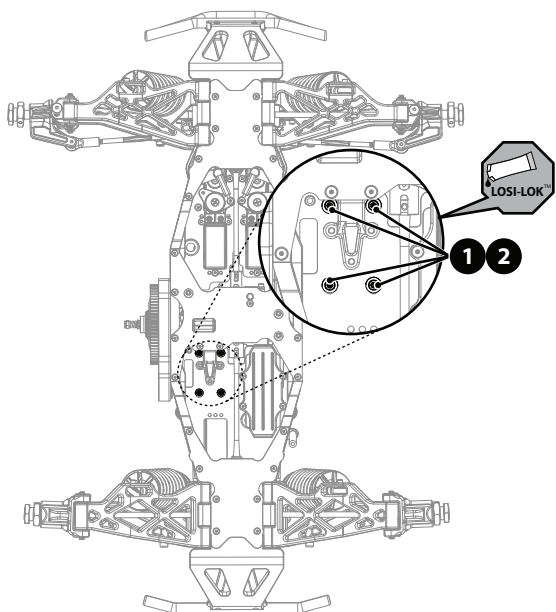


LST Series Electric Conversion Kit (LOSB0017)

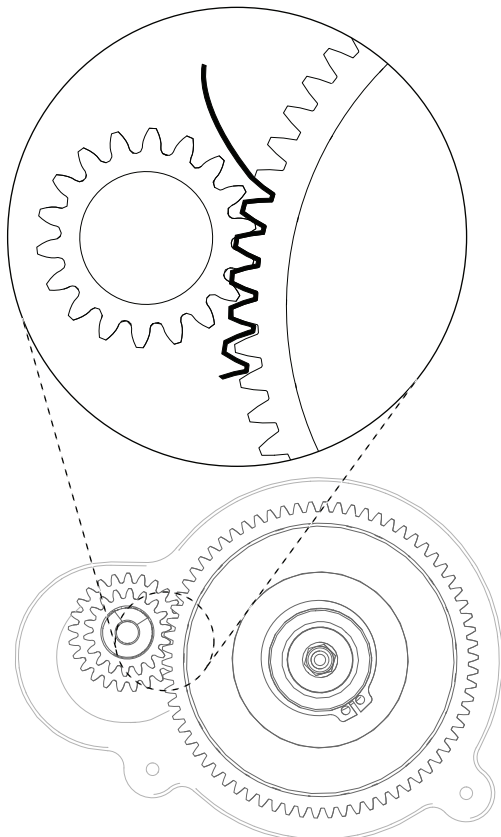
11 - Motor Installation

1 4x  **LOSA6240** #5-40 x 1/2" Cap Screw

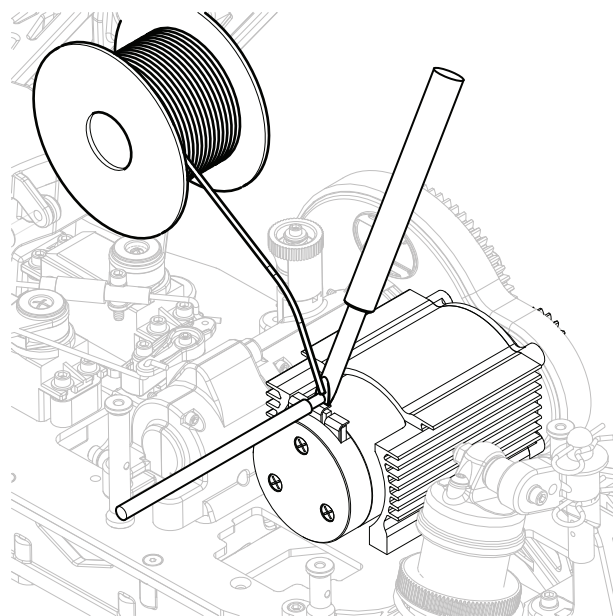
2 4x  **LOSA6215** #4 x .030 Flat Washer



12 - Set Gear Mesh



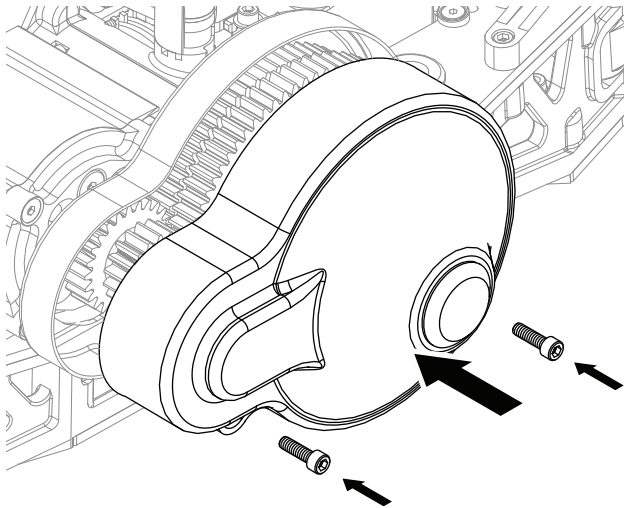
13 - Attach Motor Leads



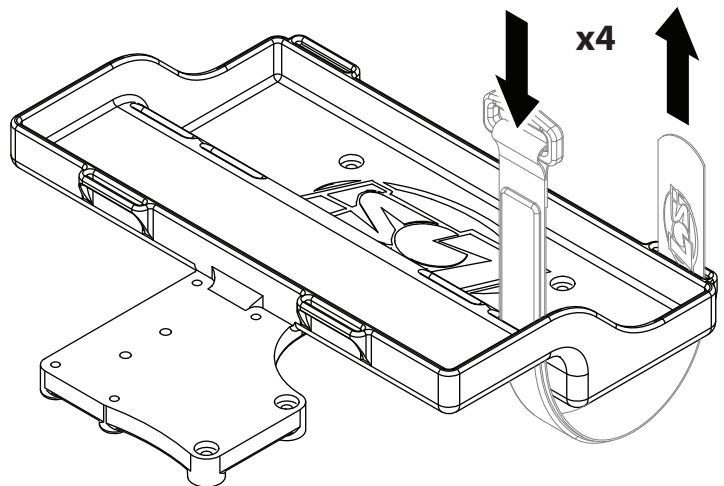


LST Series Electric Conversion Kit (LOSB0017)

14 - Attach Gear Cover

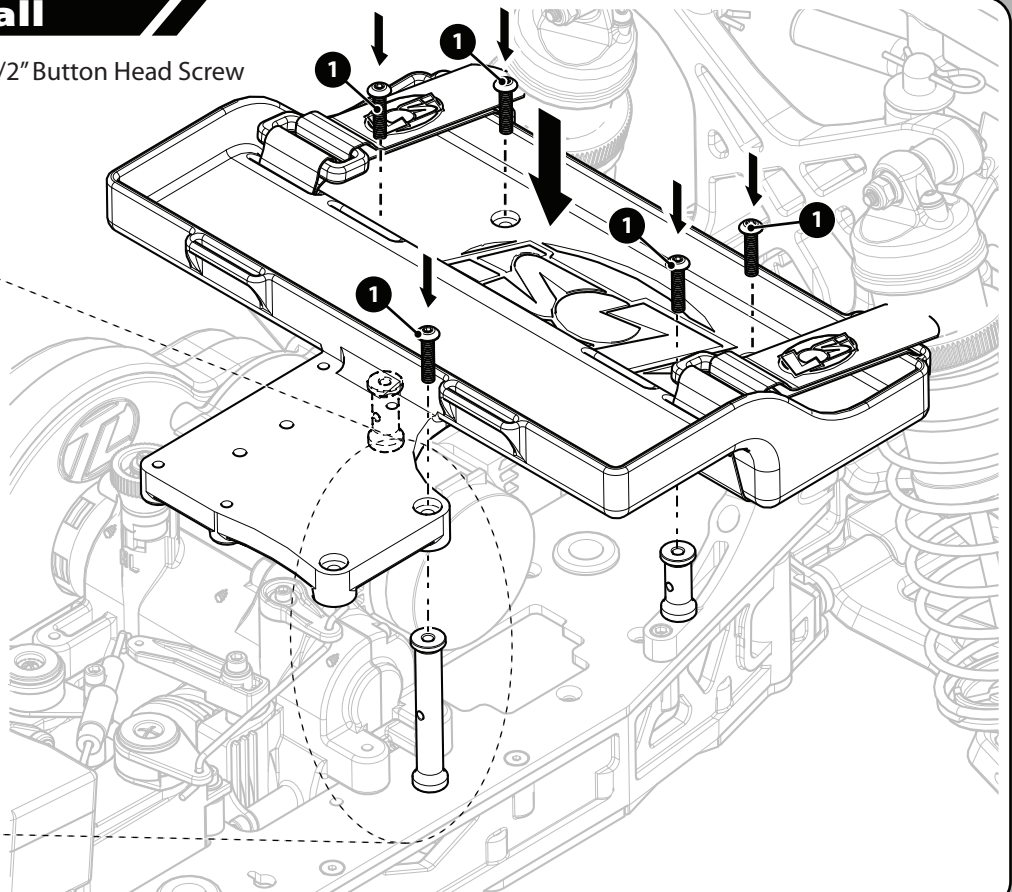
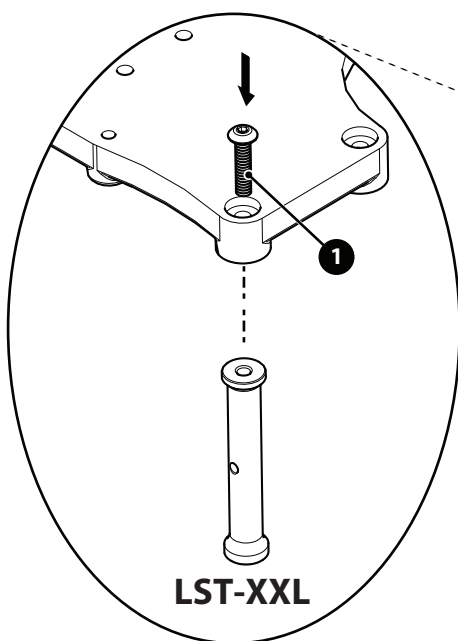


15 - Battery Strap Install



16 - Battery Tray Install

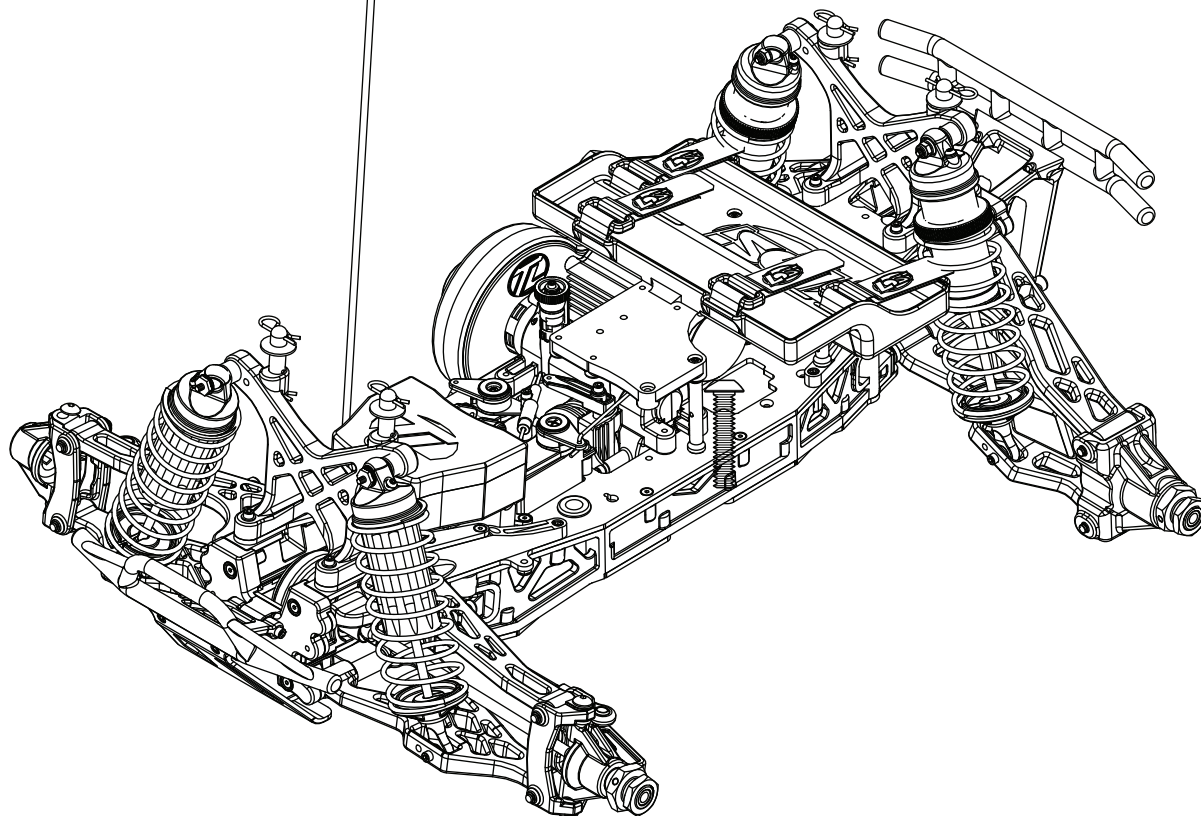
- 1 5x  LOSA6256 #4-40 x 1/2" Button Head Screw





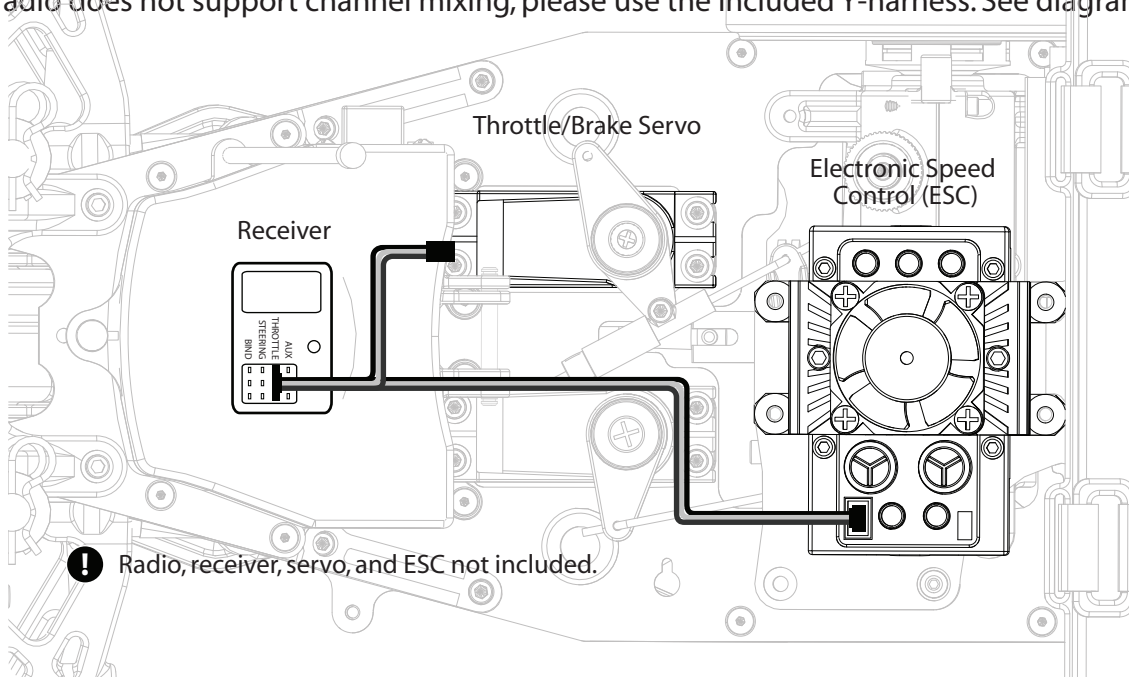
LST Series Electric Conversion Kit (LOSB0017)

17 - Mechanical Installation Complete



18 - Servo Wiring

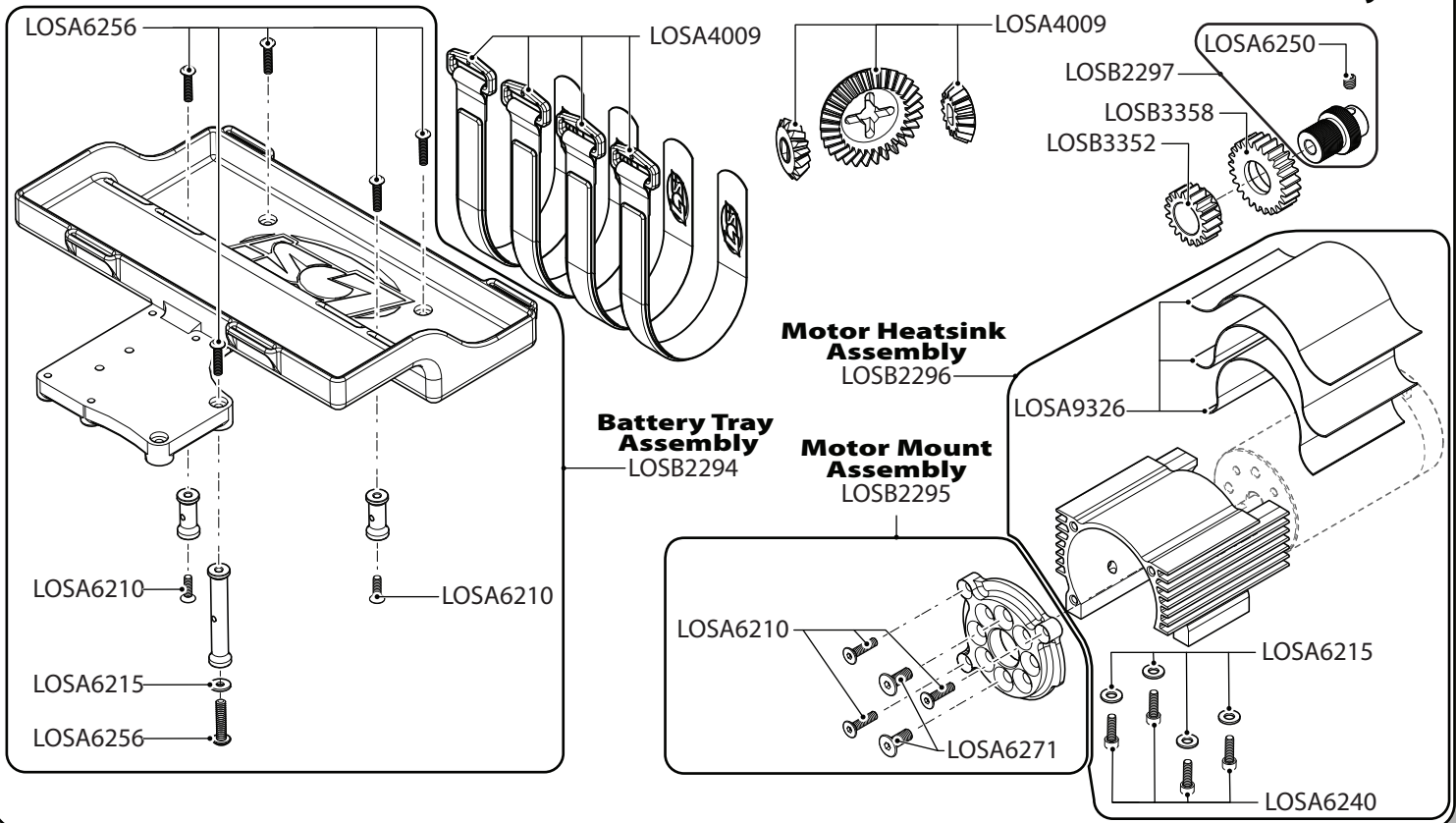
- Recommend using a radio that allows channel mixing. Slave the AUX channel, or Channel 3, to the THROTTLE channel with proper direction and throw. See the owner's manual for your radio and ESC for proper setup and calibration.
- If your radio does not support channel mixing, please use the included Y-harness. See diagram below.





LST Series Electric Conversion Kit (LOSB0017)

19 - Exploded Views



20 - Part Numbers and Descriptions

HARDWARE

LOSA4009	Battery Straps, hook/loop (2)
LOSA6271	#5-40 x 1/2" Flat Head Screws (10)
LOSA6292	4mm x 10mm Flat Head Screws (10)
LOSB9326	Heat Conduction Sheet, 4 x 8 cm (3)

ELECTRONIC PARTS

LOSB0842	Y-Harness, Standard 6"
----------	------------------------

CONVERSION KIT PARTS

LOSB2294	Battery Tray & Hardware: LST-E
LOSB2295	Motor Mount: LST-E
LOSB2296	Motor Heatsink: LST-E
LOSB2297	Pinion Gear Mount: LST-E
LOSB3120	Front/Rear Bevel Gear Set (28/17): LST, LST2, AFT, MGB
LOSB3352	18T Pinion, Low Gear, Steel: LST, MGB
LOSB3358	25T Pinion, High Gear, Steel: LST, MGB

OPTION PARTS

LOSB3452	Slipper Pads & Plates, High Friction: LST, LST2, AFT, MGB
----------	---

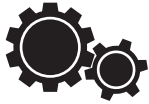
MISC

LOSA99202	Losi-Lok Threadlock, Blue
-----------	---------------------------



LST Series Electric Conversion Kit (LOSB0017)

21 - Power System Guide



Motor Kv	4S LiPo 16.8V		5S LiPo 21.0V		6S LiPo 25.2V	
	Low-Speed	High-Speed	Low-Speed	High-Speed	Low-Speed	High-Speed
1300					3.50	2.33
1400					3.50	2.33
1500			3.68	2.42	3.68	2.42
1600			3.68	2.42	3.00	2.52
1700	3.50	2.33	3.68	2.42	3.00	2.52
1800	3.50	2.33	3.89	2.52		
1900	3.68	2.42	3.89	2.52		
2000	3.68	2.42				
2100	3.00	2.52				
2200	3.00	2.52				
2300	3.00	2.52				
2400	3.00	2.52				

- Ratio = Spur / Pinion
- Recommended ratios are for use with the included 28T/17T transmission ring and pinion gears.
- Always follow the ESC and motor manufacturers' recommendations for setup and use of their product.
- Select lower Kv motor and lower voltage battery for less wear and tear on your vehicle.
- Total number of teeth for low-speed spur and pinion must be equal to number of teeth for high-speed spur and pinion.

22 - Warranty

WARRANTY AND REPAIR POLICY

Exclusive Warranty- Horizon Hobby, Inc., (Horizon) warrants that the Products purchased (the "Product") will be free from defects in materials and workmanship at the date of purchase by the Purchaser.

LIMITED WARRANTY: Horizon reserves the right to change or modify this warranty without notice and disclaims all other warranties, express or implied.

(a) This warranty is limited to the original Purchaser ("Purchaser") and is not transferable. REPAIR OR REPLACEMENT AS PROVIDED UNDER THIS WARRANTY IS THE EXCLUSIVE REMEDY OF THE PURCHASER. This warranty covers only those Products purchased from an authorized Horizon dealer. Third party transactions are not covered by this warranty. Proof of purchase is required for warranty claims.

(b) Limitations- HORIZON MAKES NO WARRANTY OR REPRESENTATION, EXPRESS OR IMPLIED, ABOUT NON-INFRINGEMENT, MERCHANTABILITY OR FITNESS FOR A PARTICULAR PURPOSE OF THE PRODUCT. THE PURCHASER ACKNOWLEDGES THAT THEY ALONE HAVE DETERMINED THAT THE PRODUCT WILL SUITABLY MEET THE REQUIREMENTS OF THE PURCHASER'S INTENDED USE.

(c) Purchaser Remedy- Horizon's sole obligation hereunder shall be that Horizon will, at its option, (i) repair or (ii) replace, any Product determined by Horizon to be defective. In the event of a defect, these are the Purchaser's exclusive remedies. Horizon reserves the right to inspect



LST Series Electric Conversion Kit (LOSB0017)

22 - Warranty (cont.)

any and all equipment involved in a warranty claim. Repair or replacement decisions are at the sole discretion of Horizon. This warranty does not cover cosmetic damage or damage due to acts of God, accident, misuse, abuse, negligence, commercial use, or modification of or to any part of the Product. This warranty does not cover damage due to improper installation, operation, maintenance, or attempted repair by anyone other than Horizon. Return of any goods by Purchaser must be approved in writing by Horizon before shipment.

DAMAGE LIMITS: HORIZON SHALL NOT BE LIABLE FOR SPECIAL, INDIRECT OR CONSEQUENTIAL DAMAGES, LOSS OF PROFITS OR PRODUCTION OR COMMERCIAL LOSS IN ANY WAY CONNECTED WITH THE PRODUCT, WHETHER SUCH CLAIM IS BASED IN CONTRACT, WARRANTY, NEGLIGENCE, OR STRICT LIABILITY. Further, in no event shall the liability of Horizon exceed the individual price of the Product on which liability is asserted. As Horizon has no control over use, setup, final assembly, modification or misuse, no liability shall be assumed nor accepted for any resulting damage or injury. By the act of use, setup or assembly, the user accepts all resulting liability.

If you as the Purchaser or user are not prepared to accept the liability associated with the use of this Product, you are advised to return this Product immediately in new and unused condition to the place of purchase.

Law: These Terms are governed by Illinois law (without regard to conflict of law principals).

SAFETY PRECAUTIONS: This is a sophisticated hobby Product and not a toy. It must be operated with caution and common sense and requires some basic mechanical ability. Failure to operate this Product in a safe and responsible manner could result in injury or damage to the Product or other property. This Product is not intended for use by children without direct adult supervision. The Product manual contains instructions for safety, operation and maintenance. It is essential to read and follow all the instructions and warnings in the manual, prior to assembly, setup or use, in order to operate correctly and avoid damage or injury.

WARRANTY SERVICES:

QUESTIONS, ASSISTANCE, AND REPAIRS: Your local hobby store and/or place of purchase cannot provide warranty support or repair. Once assembly, setup or use of the Product has been started, you must contact Horizon directly. This will enable Horizon to better answer your questions and service you in the event that you may need any assistance. For questions or assistance, please direct your email to productsupport@horizonhobby.com, or call 877.504.0233 toll free to speak to a service technician.

INSPECTION OR REPAIRS: If this Product needs to be inspected or repaired, please call for a Return Merchandise Authorization (RMA). Pack the Product securely using a shipping carton. Please note that original boxes may be included, but are not designed to withstand the rigors of shipping without additional protection. Ship via a carrier that provides tracking and insurance for lost or damaged parcels, as Horizon is not responsible for merchandise until it arrives and is accepted at our facility. A Service Repair Request is available at www.horizonhobby.com on the "Support" tab. If you do not have internet access, please include a letter with your complete name, street address, email address and phone number where you can be reached during business days, your RMA number, a list of the included items, method of payment for any non-warranty expenses and a brief summary of the problem. Your original sales receipt must also be included for warranty consideration. Be sure your name, address, and RMA number are clearly written on the outside of the shipping carton.



LST Series Electric Conversion Kit (LOSB0017)

22 - Warranty (cont.)

WARRANTY INSPECTION AND REPAIRS: To receive warranty service, you must include your original sales receipt verifying the proof-of-purchase date. Provided warranty conditions have been met, your Product will be repaired or replaced free of charge. Repair or replacement decisions are at the sole discretion of Horizon Hobby.

NON-WARRANTY REPAIRS: Should your repair not be covered by warranty the repair will be completed and payment will be required without notification or estimate of the expense unless the expense exceeds 50% of the retail purchase cost. By submitting the item for repair you are agreeing to payment of the repair without notification. Repair estimates are available upon request. You must include this request with your repair. Non-warranty repair estimates will be billed a minimum of ½ hour of labor. In addition you will be billed for return freight. Please advise us of your preferred method of payment. Horizon accepts money orders and cashiers checks, as well as Visa, MasterCard, American Express, and Discover cards. If you choose to pay by credit card, please include your credit card number and expiration date. Any repair left unpaid or unclaimed after 90 days will be considered abandoned and will be disposed of accordingly. Please note: non-warranty repair is only available on electronics and model engines.

Country of Purchase	Horizon Hobby	Address	Phone Number/Email
United States	Horizon Service Center (Electronics and engines) Horizon Product Support (All other products)	4105 Fieldstone Rd Champaign, Illinois 61822 USA	877-504-0233 productsupport@horizonhobby.com
United Kingdom	Horizon Hobby UK	Units 1-4 Ploysters Rd Staple Tye Harlow, Essex CM18 7NS United Kingdom	+44 (0) 1279 641 097 sales@horizonhobby.co.uk
Germany	Horizon Technischer Service	Hamburger Str. 10 25335 Elmshorn Germany	+49 4 121 46199 66 service@horizonhobby.de
France	Horizon Hobby SAS	14 Rue. Gustave Eiffel Zone d' Activité du Révell Matin 91230 Montegron	+33 (0) 1 60 47 44 70

COMPLIANCE INFORMATION FOR THE EUROPEAN UNION:

Instructions for Disposal of WEEE by Users in the European Union

This product must not be disposed of with other waste. Instead, it is the user's responsibility to dispose of their waste equipment by handing it over to a designated collection point for the recycling of waste electrical and electronic equipment. The separate collection and recycling of your waste equipment at the time of disposal will help to conserve natural resources and ensure that it is recycled in a manner that protects human health and the environment. For more information about where you can drop off your waste equipment for recycling, please contact your local city office, your household waste disposal service or where you purchased the product.