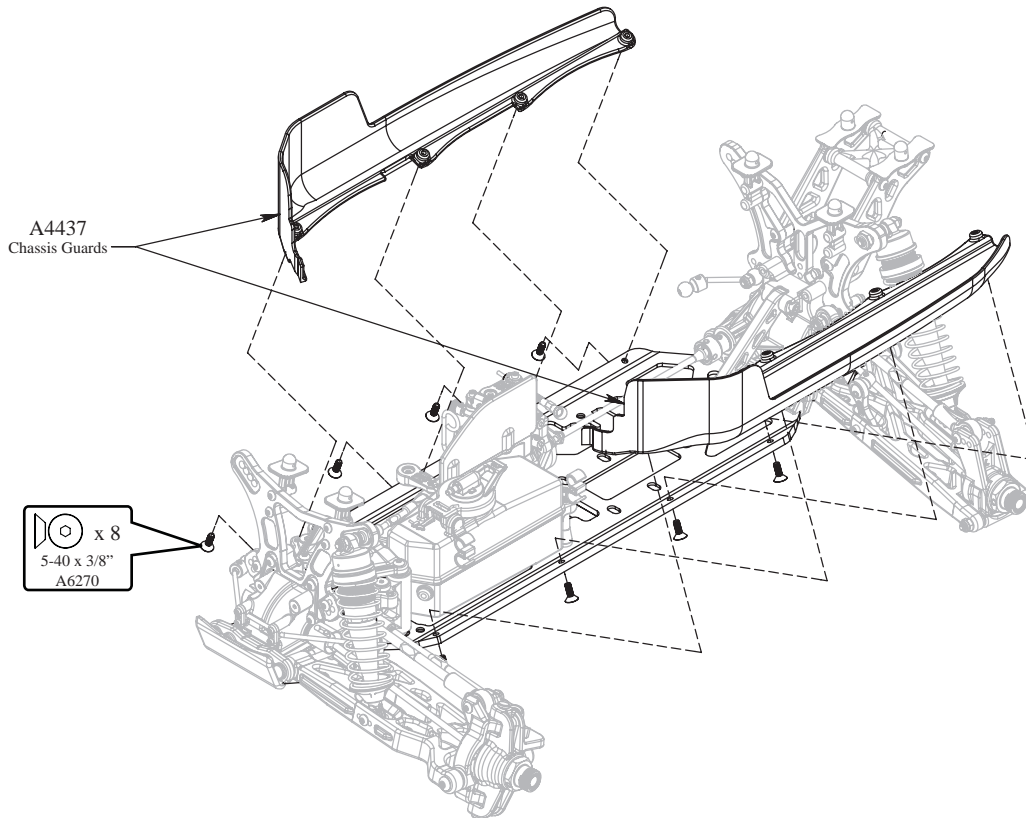


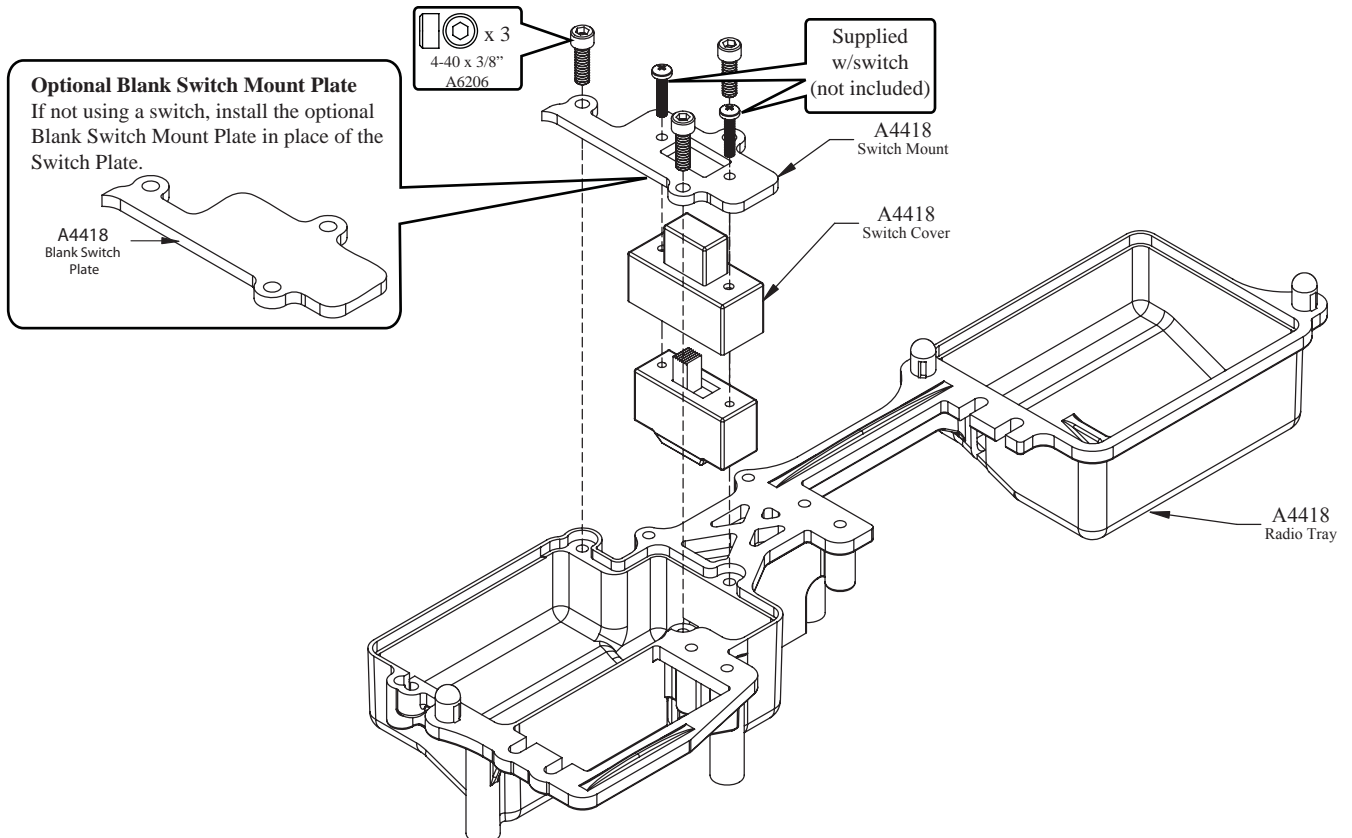
## STEP F-01

### Chassis Guard Installation



## STEP F-02

### Switch Installation

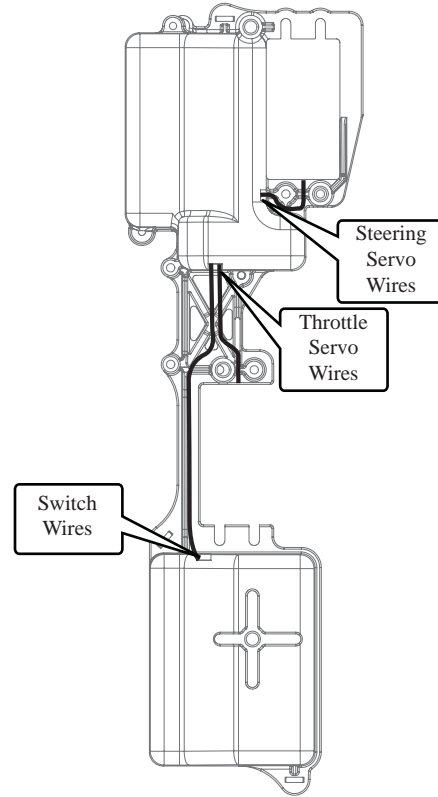


## STEP F-03

### Servo Chart/Wiring Diagram

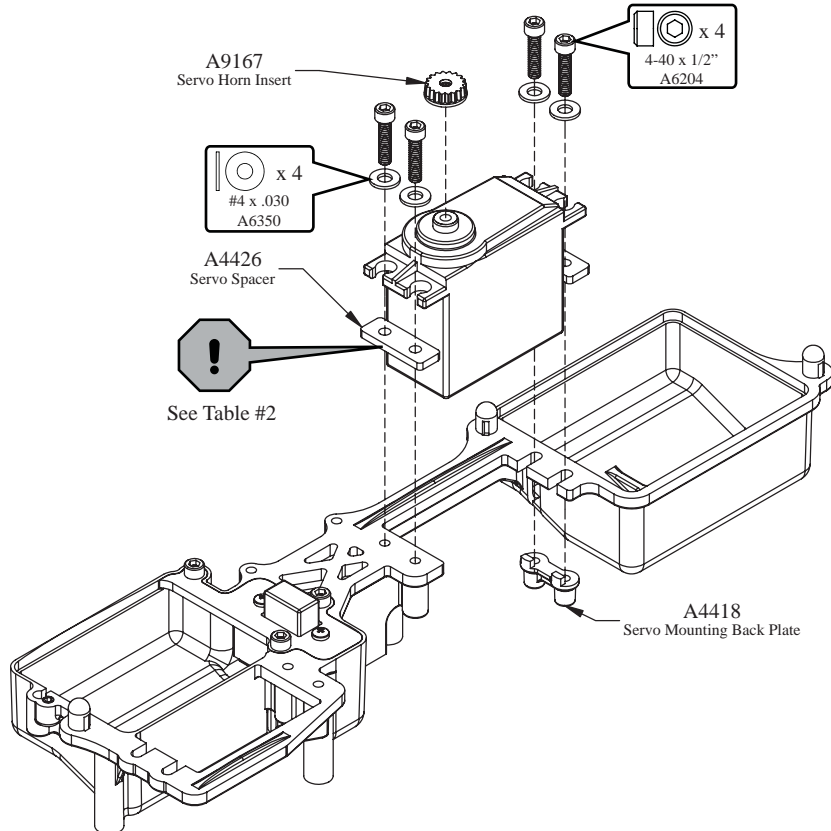
Servo Manufacturer, Make/Model		Servo Spacer	Servo Horn
JR	All (DZ9000T/S Needs Spacer )	No	23T
Airtronics Savwa	94357Z, 94358Z, 94649Z, 94360Z, 94452Z, 94758Z, 94737Z, 94738Z	Yes	23T
	94102Z, 94112Z, 94361Z, 94362Z	Yes	
Hitec	All	No	24T
Futaba	All (S9102 DOES NOT FIT)	No	25T
KO	PDS-2123, 2344, 2363, 2365, 2366	No	23T
		No	

Table2: Servo assembly and installation



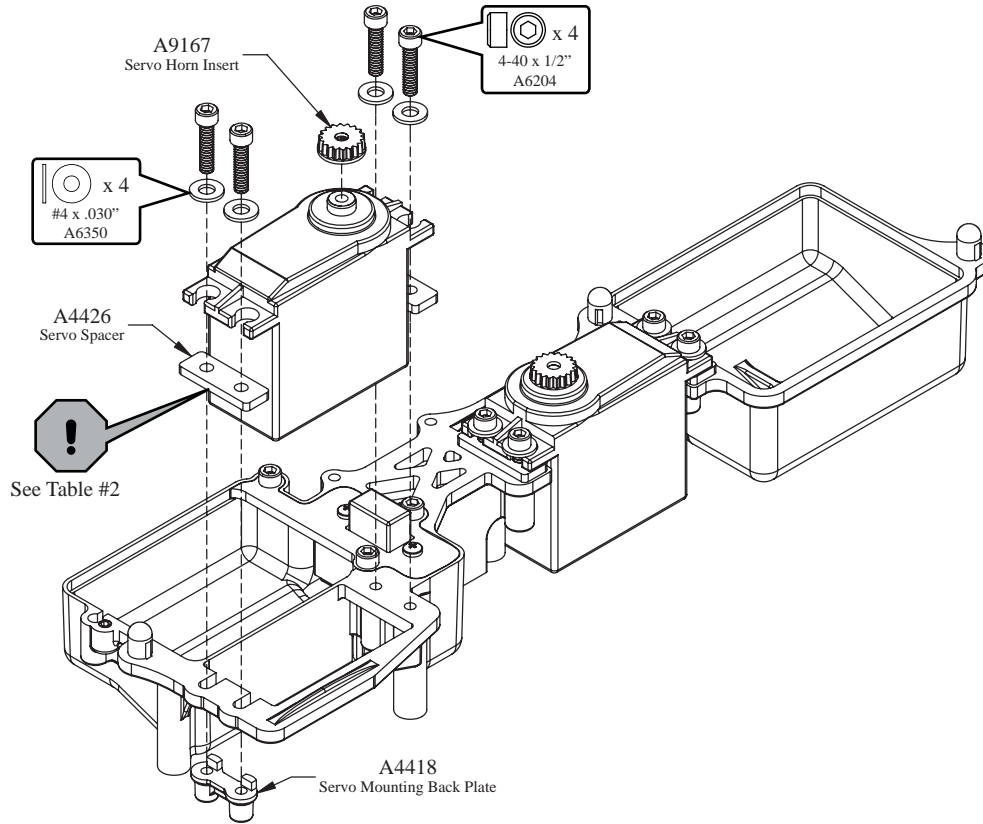
## STEP F-04

### Throttle Servo Installation



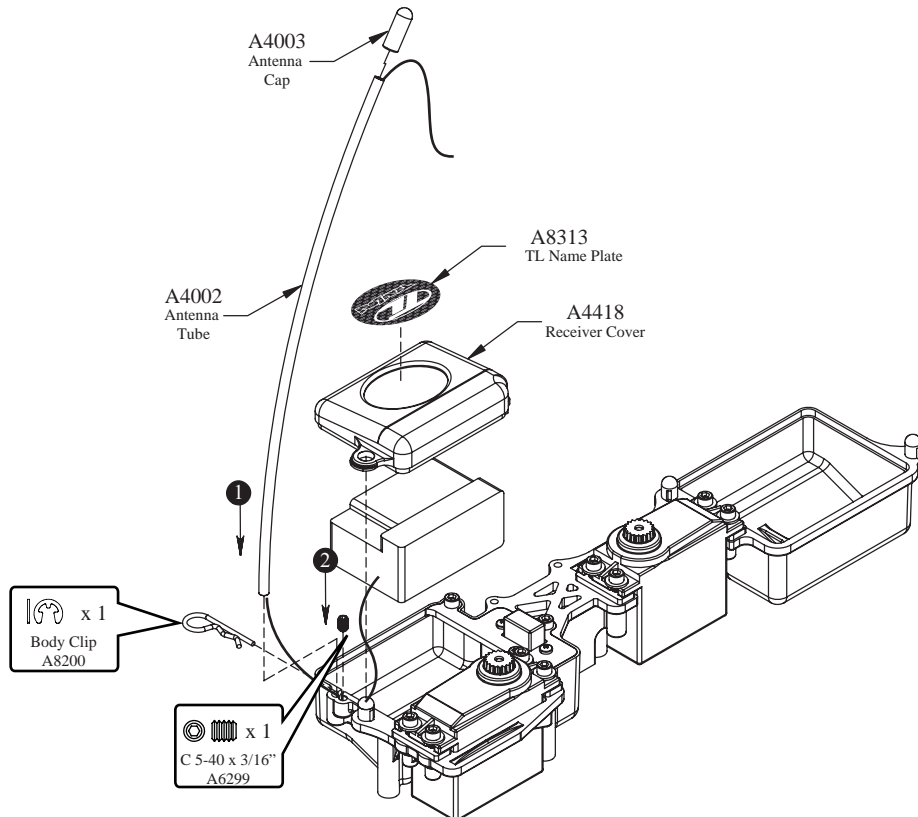
**STEP F-05**

*Steering Servo Installation*

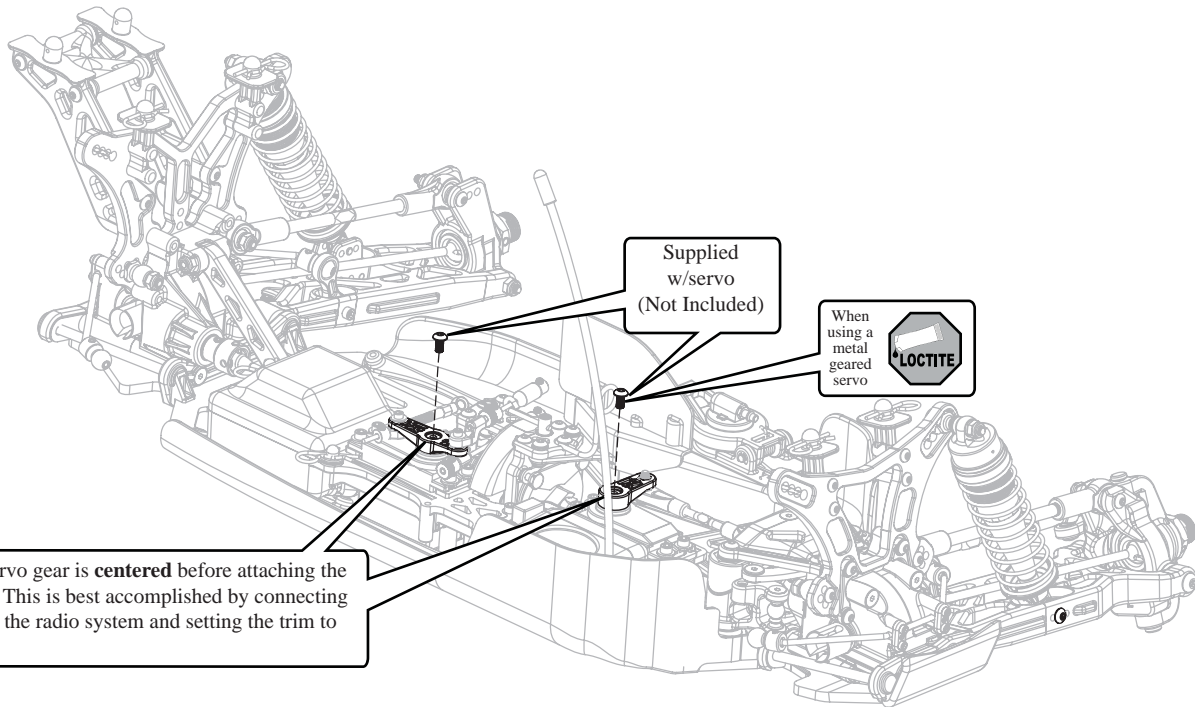
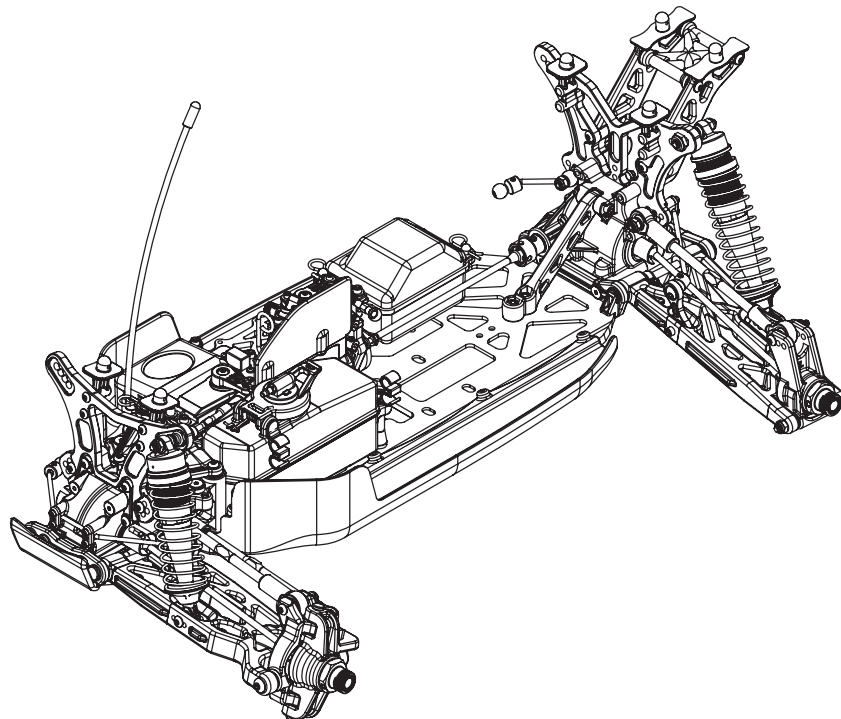


**STEP F-06**

*Receiver/Antenna Tube Assembly*



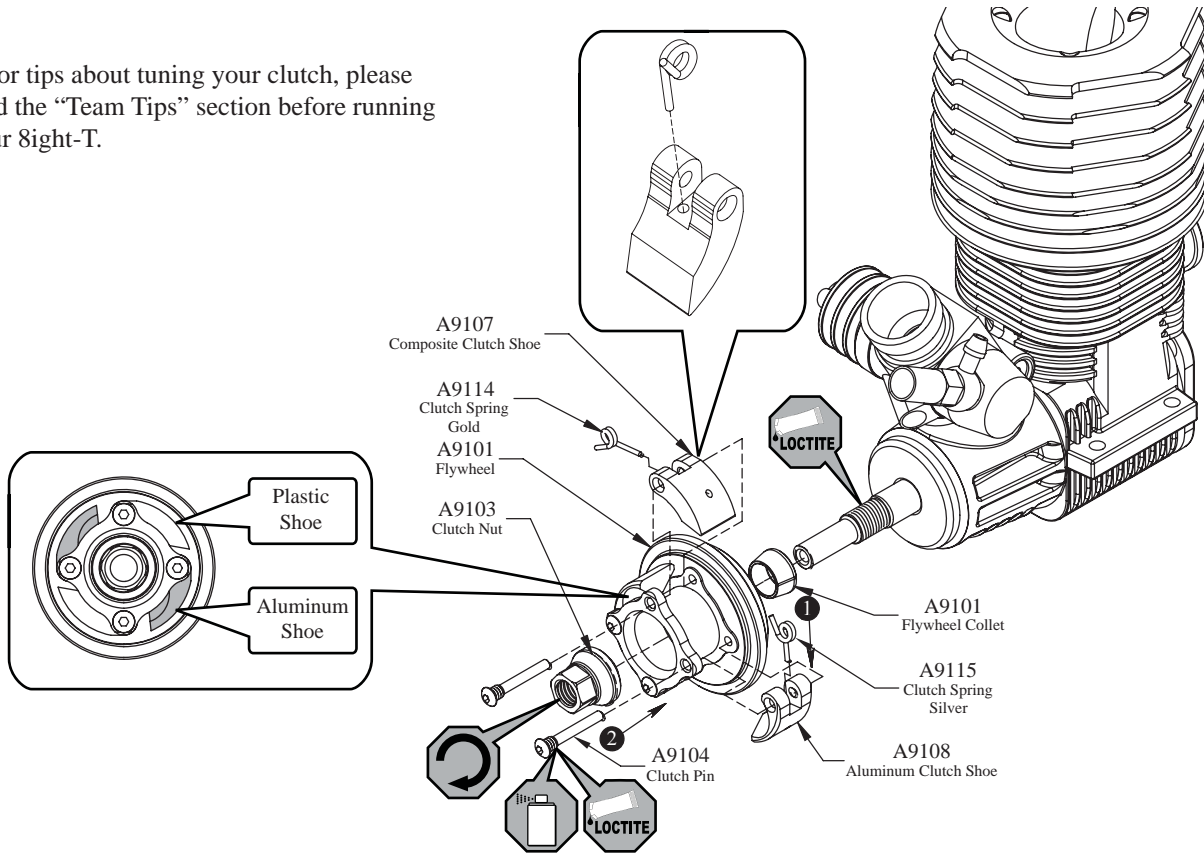


**STEP F-09***Servo Horn Installation***STEP F-10***Completed Radio Tray Installation*

## STEP G-01

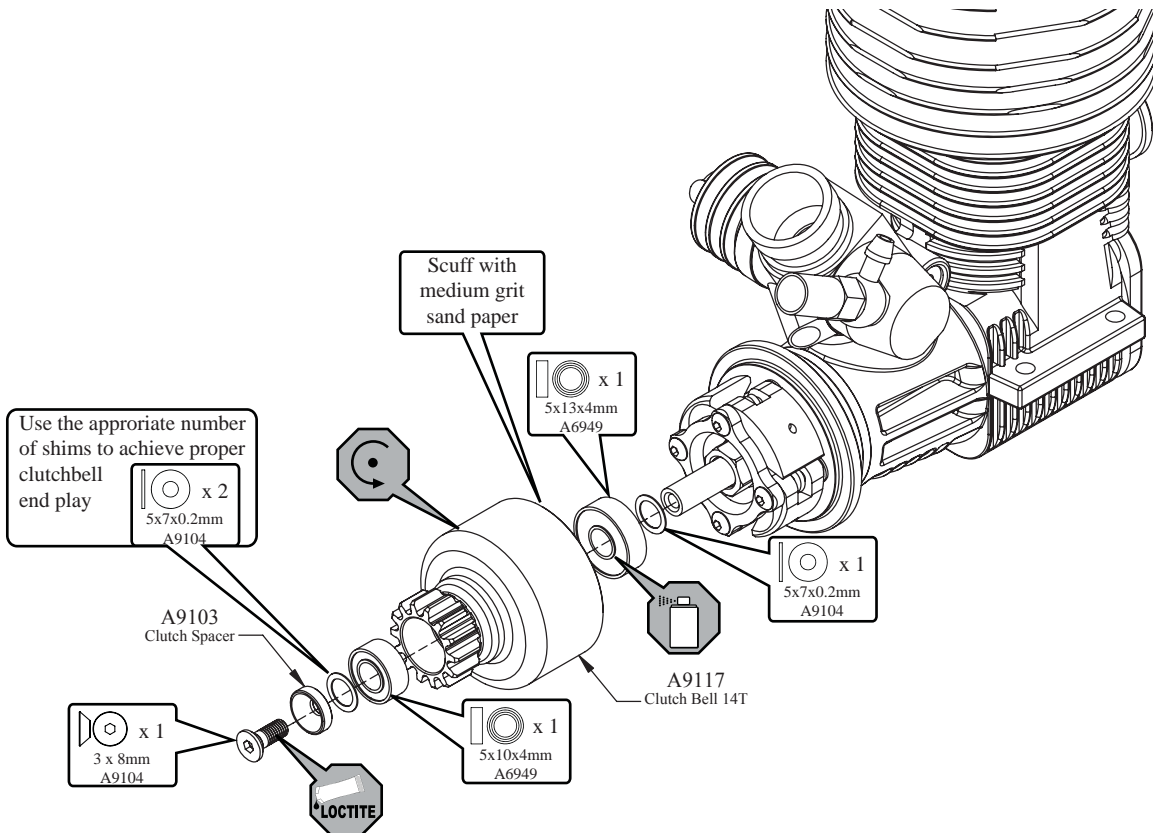
### Clutch Assembly

\* For tips about tuning your clutch, please read the "Team Tips" section before running your 8ight-T.



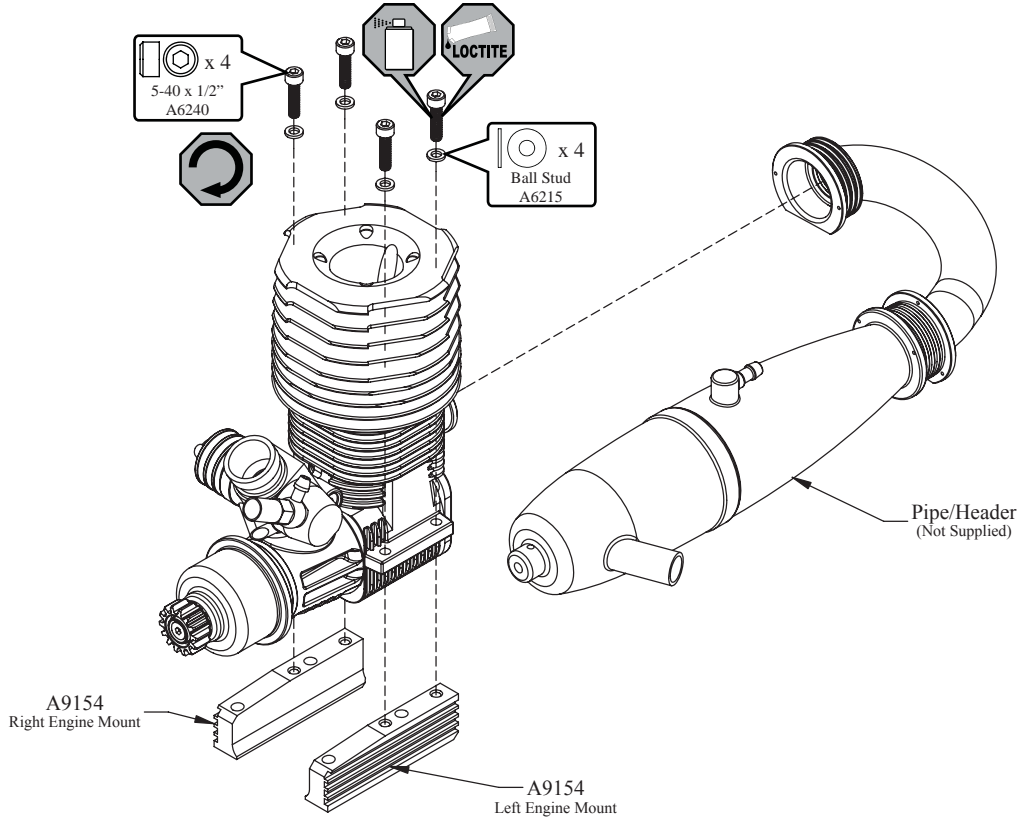
## STEP G-02

### Clutch Bell Assembly



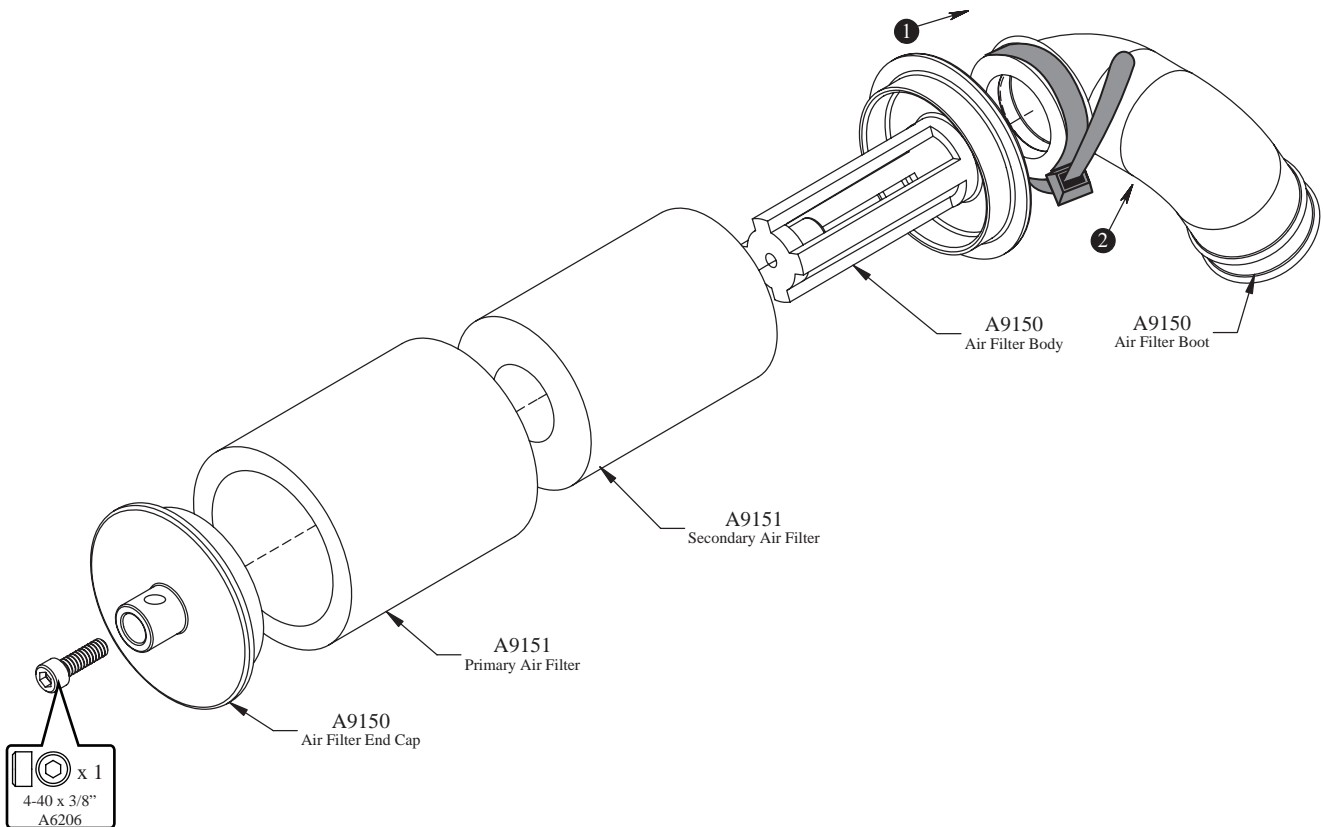
## STEP G-03

### Engine Mount Assembly



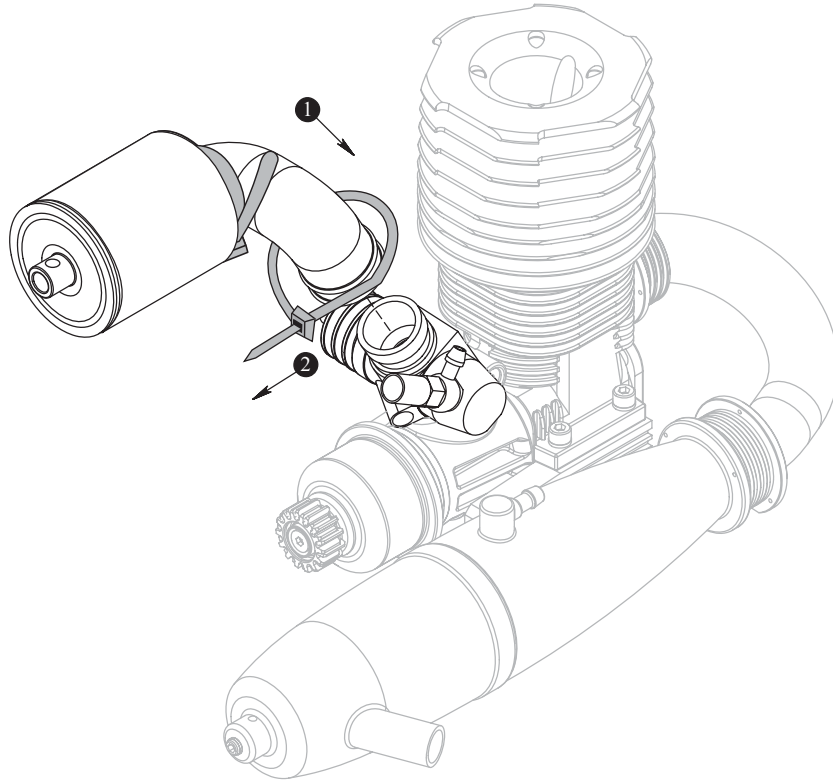
## STEP G-04

### Air Filter Assembly



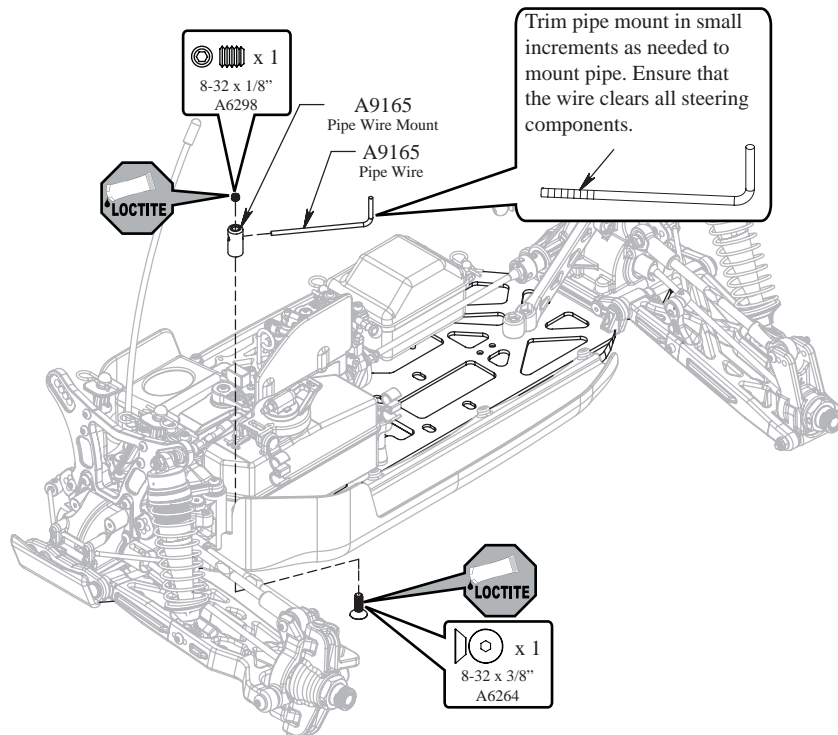
## STEP G-05

### Air Filter Installation



## STEP G-06

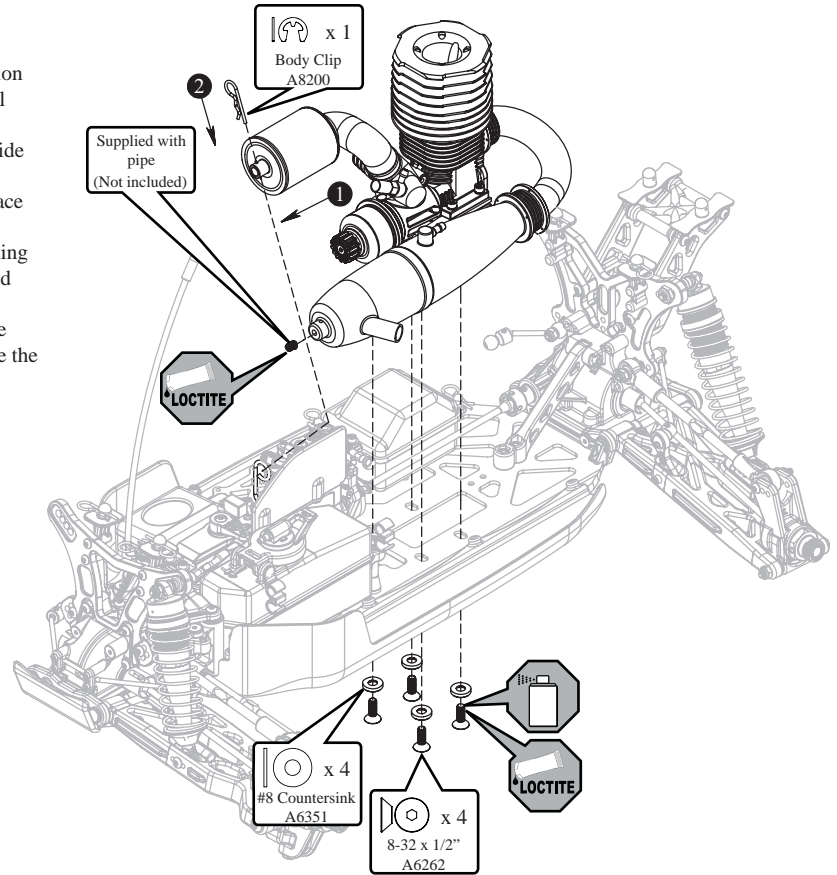
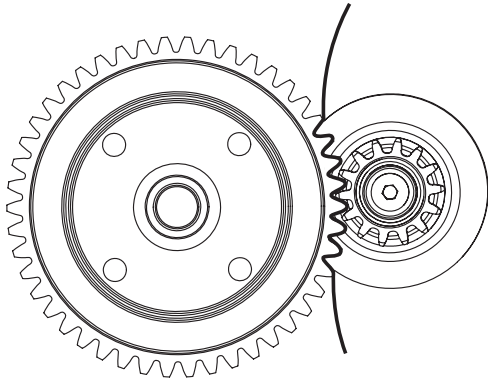
### Pipe Mount Assembly



## STEP G-07

### Engine Installation

- Adjust the Gear mesh between the Clutch Bell and the Spur Gear by sliding the Engine Mounts in the slots of the Chassis. In order to function properly, the Gears should be as close as possible, but still have a small amount of backlash (space between the Gear teeth).
- Place a piece of paper between the Clutch Bell Gear and Spur Gear, Slide the engine sideways until the paper is pinched between the Gears and Tighten the engine mount Screws. This will give a small amount of space between the gears.
- You should be able to rock one Gear back and forth *slightly* while holding the other one steady. Be sure to check the Gear mesh all the way around the Spur gear.
- Once the engine alignment and Gear mesh are correct, tighten all of the Screws. Re-check the Gear mesh after all the Screws are tight to ensure the Engine Mounts did not move.



## STEP G-08

### Fuel Tube/Completed Engine Assy.

