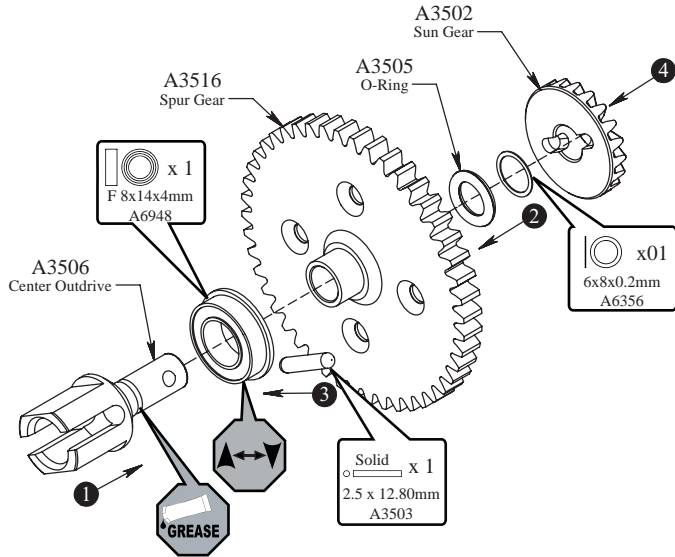


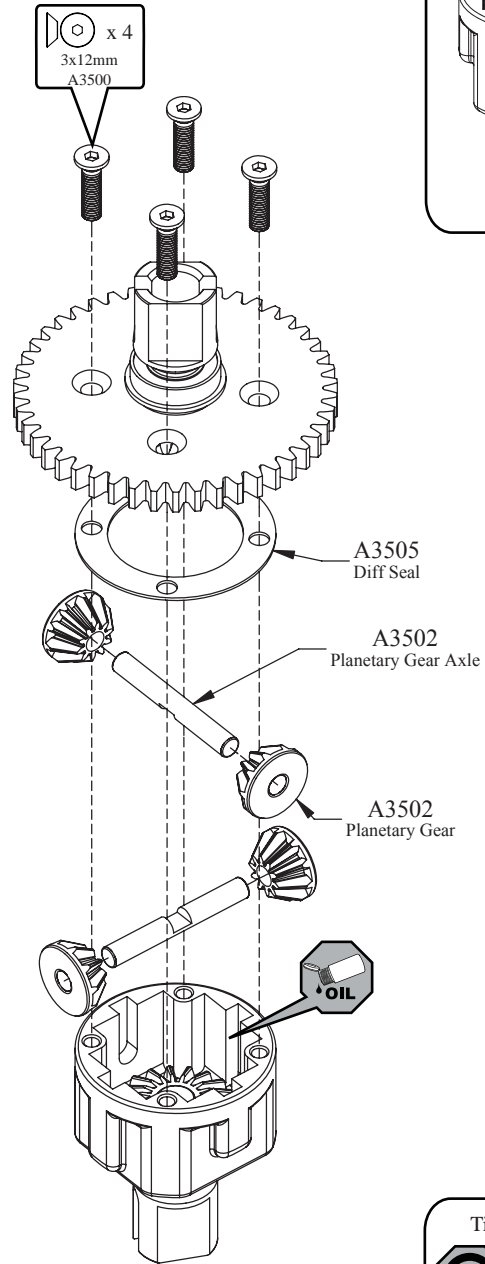
STEP C-01

Spur Gear Assembly



STEP C-03

Complete Diff Assembly

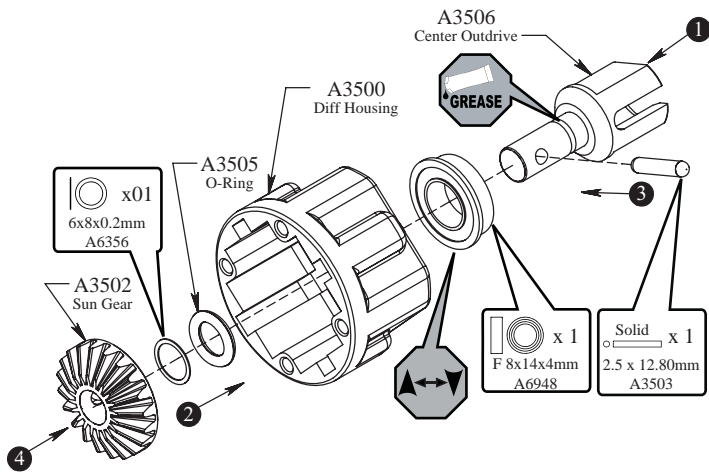


Fill with 10000wt. oil just above the planetary gear

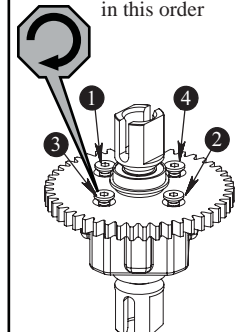


STEP C-02

Diff Case Assembly

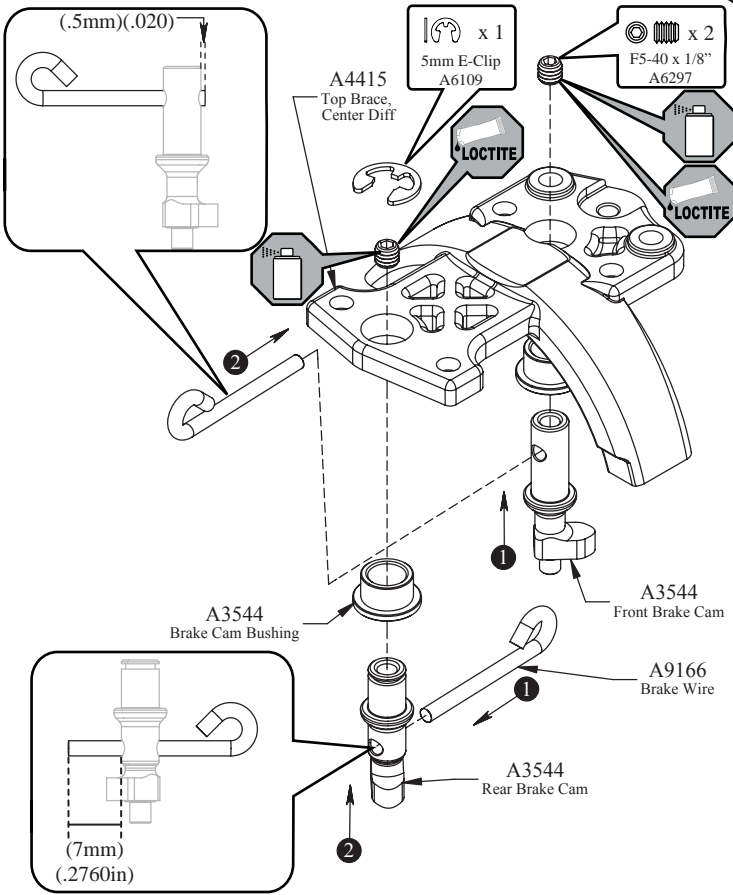


Tighten the diff screws in this order



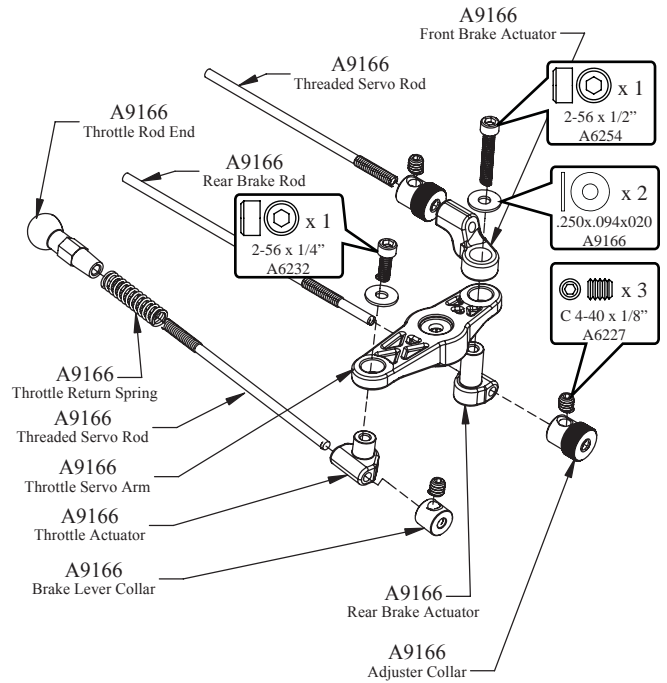
STEP C-04

Center Top Brace Assembly



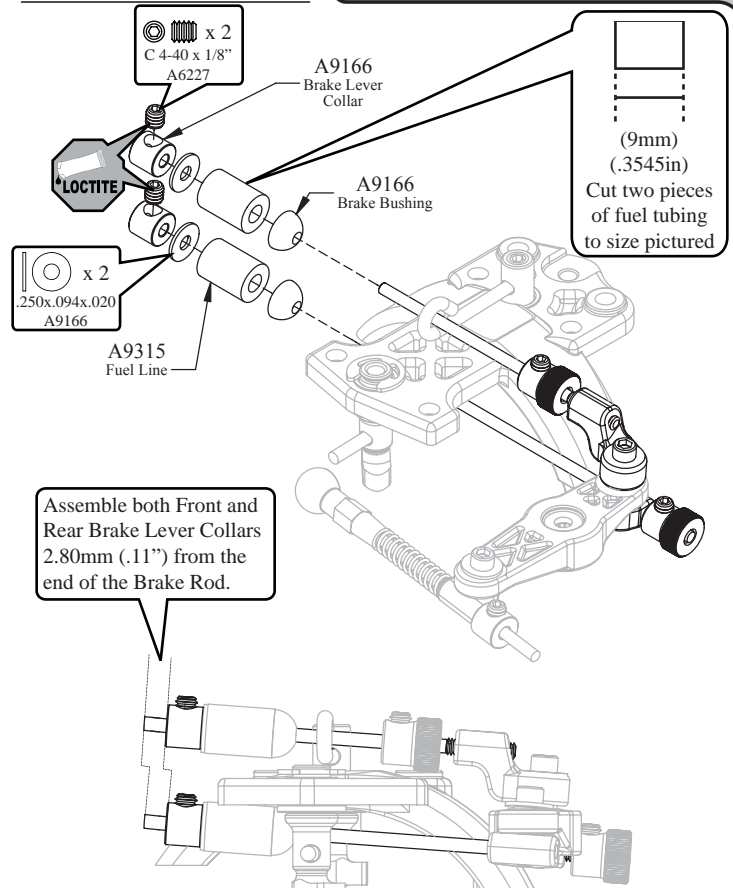
STEP C-05

Linkage Assembly



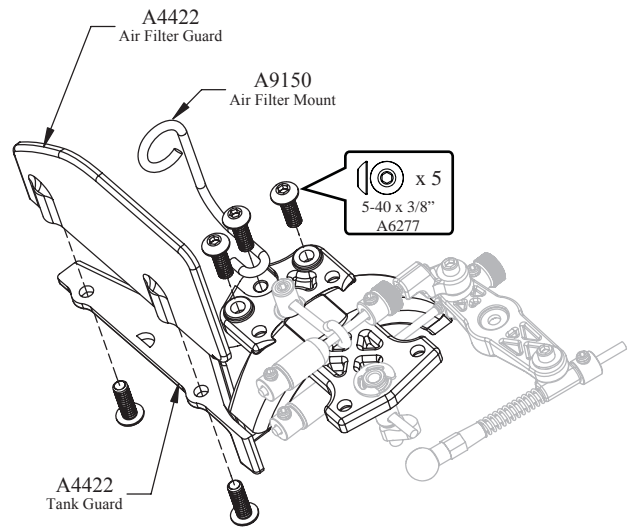
STEP C-06

Linkage Assembly



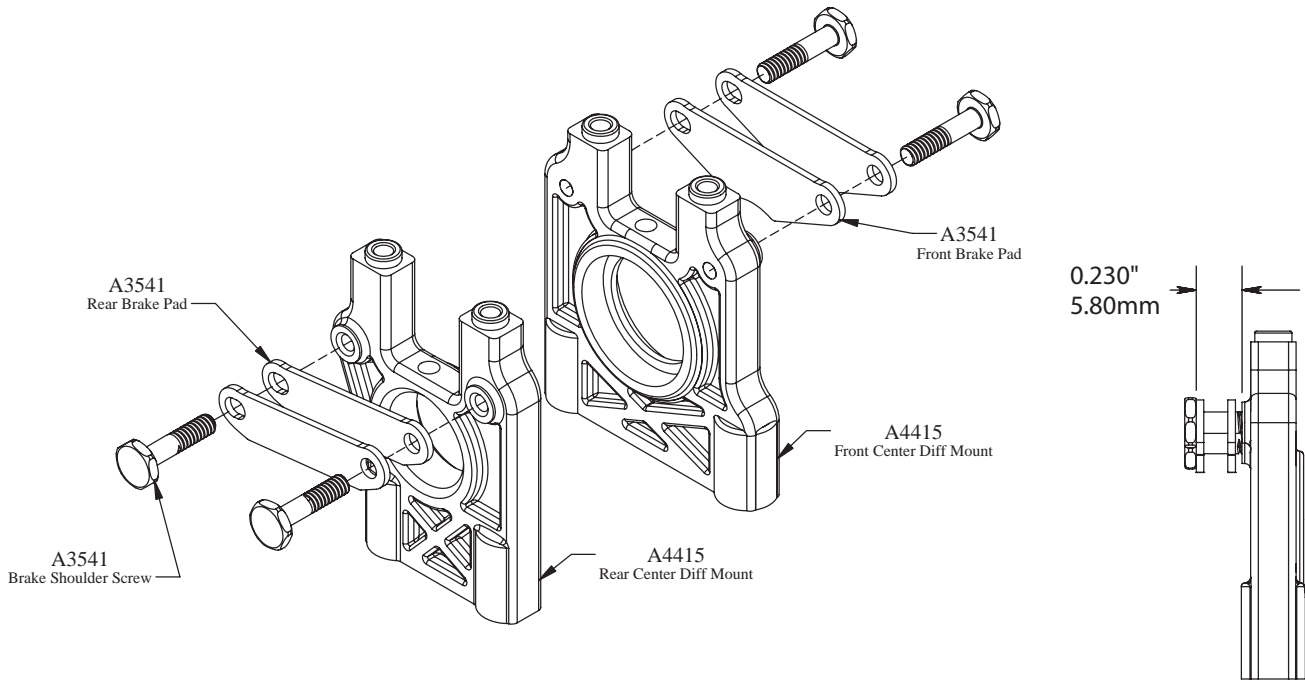
STEP C-07

Air Filter Mount & Guard



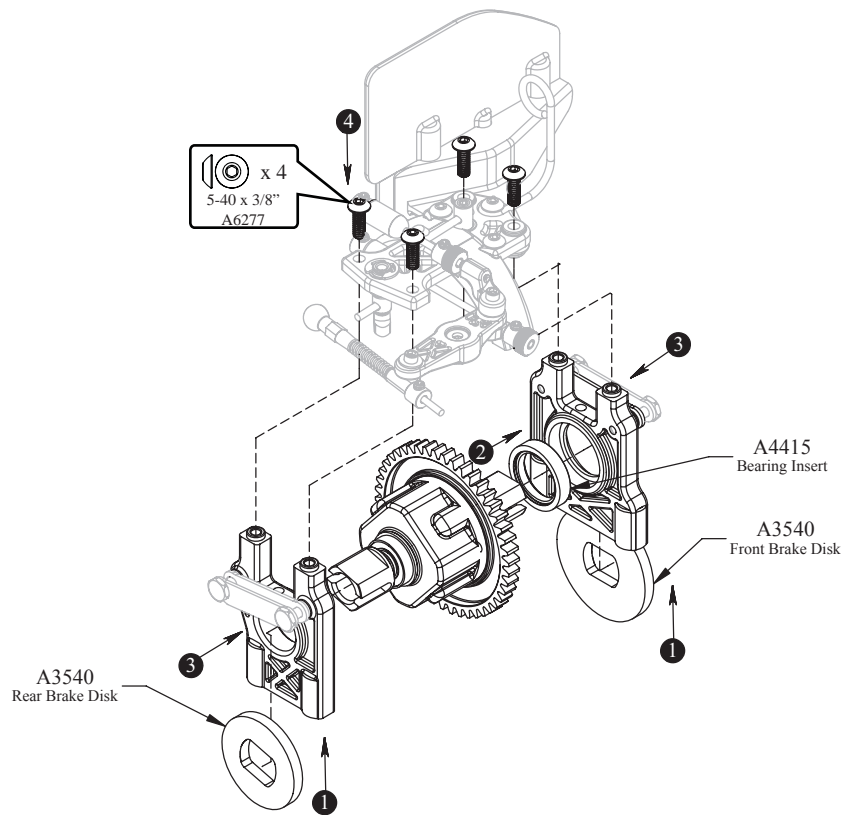
STEP C-08

Brake Caliper Assembly



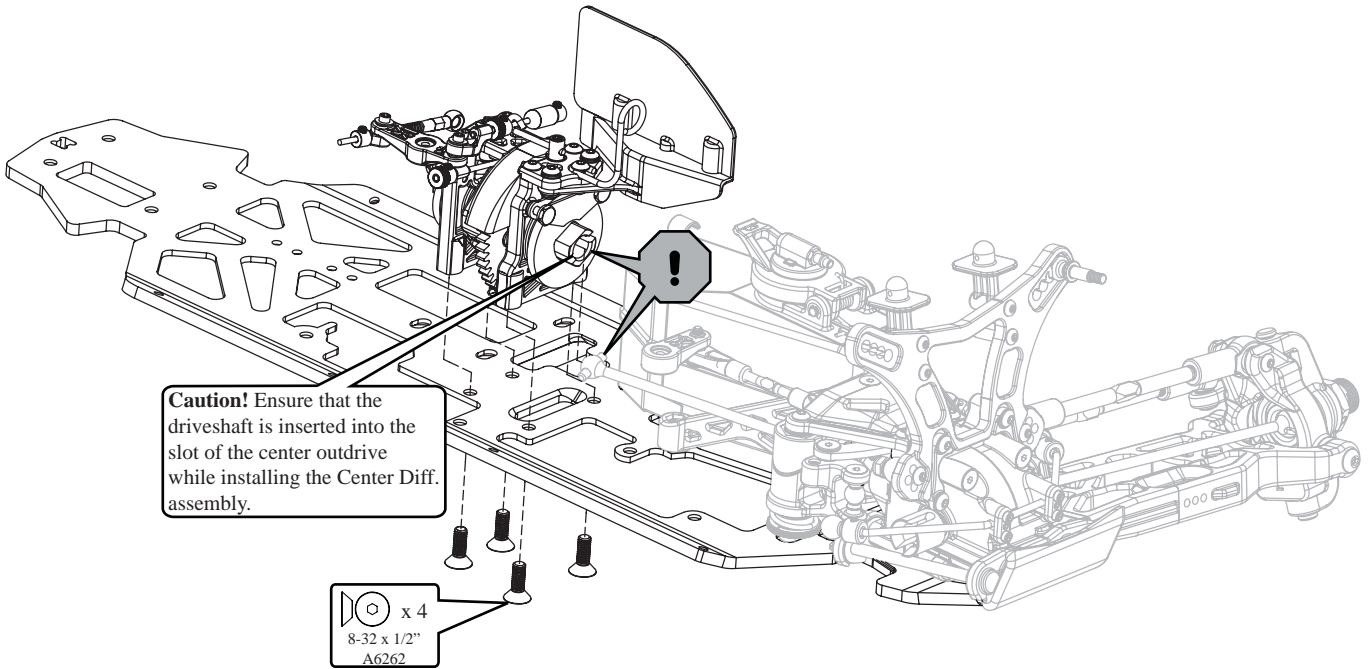
STEP C-09

Center Diff/Brake Rotor Assembly



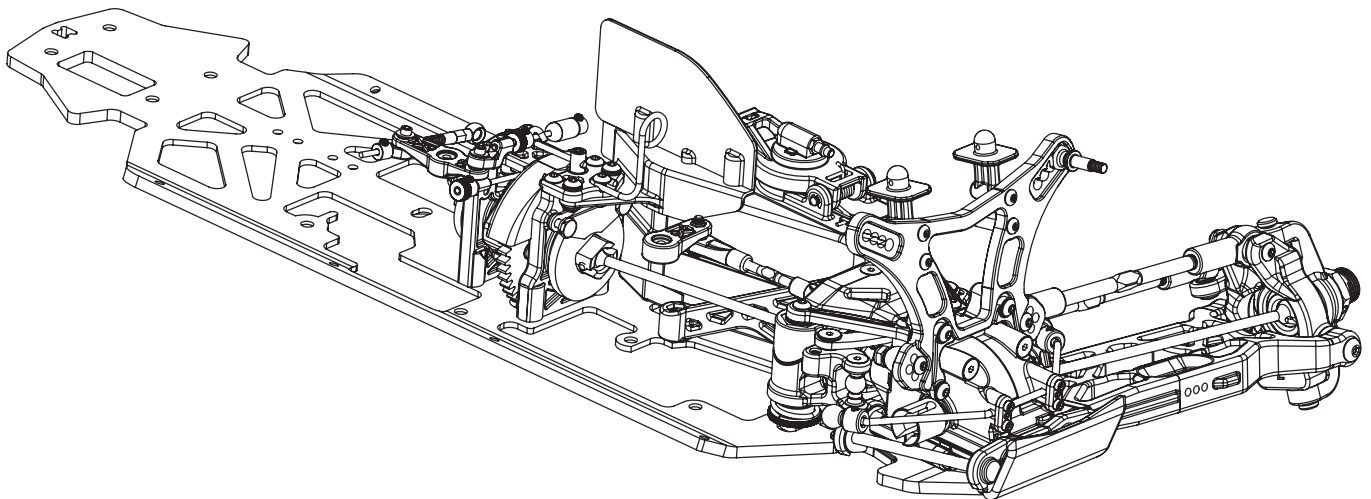
STEP C-10

Center Diff Installation



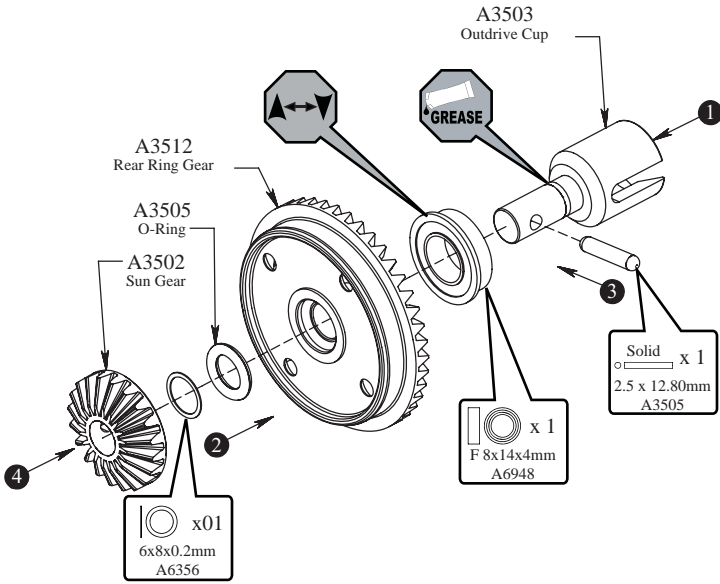
STEP C-11

Completed Center Diff Assembly



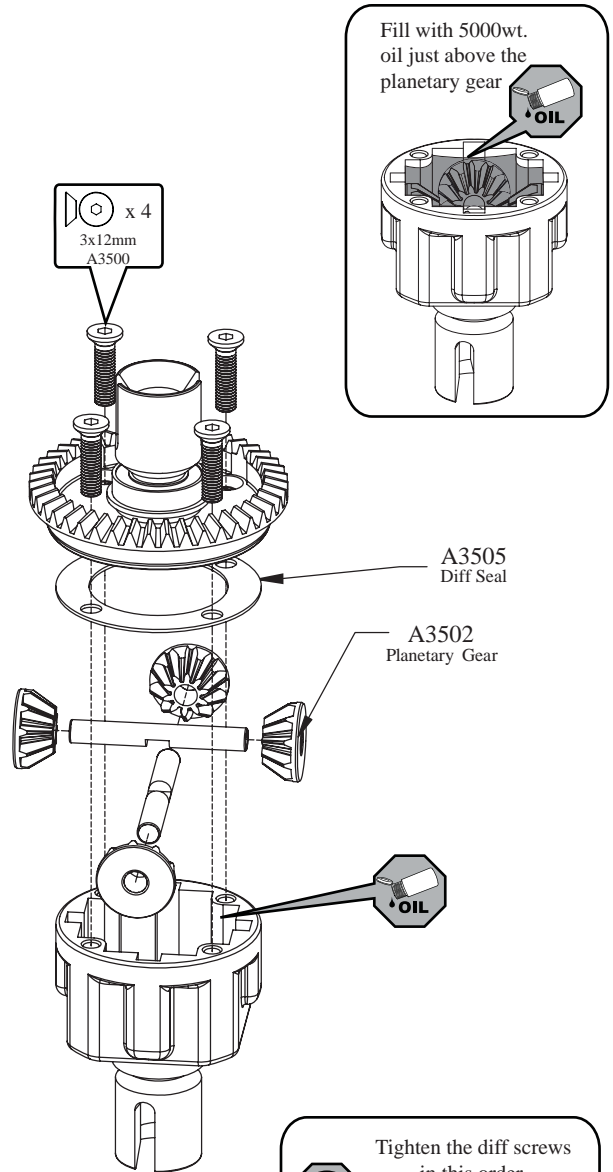
STEP D-01

Ring Gear Assembly



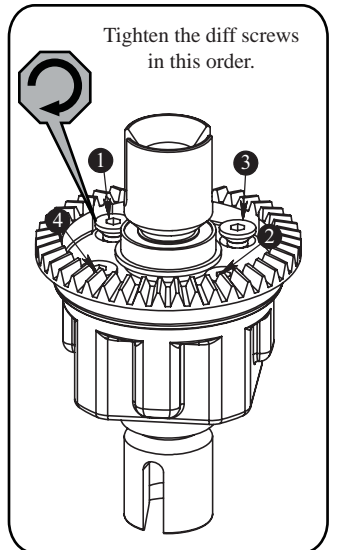
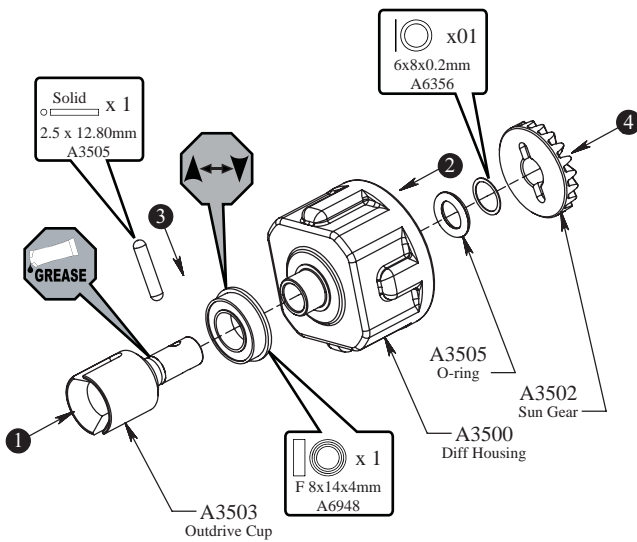
STEP D-03

Complete Diff Assembly



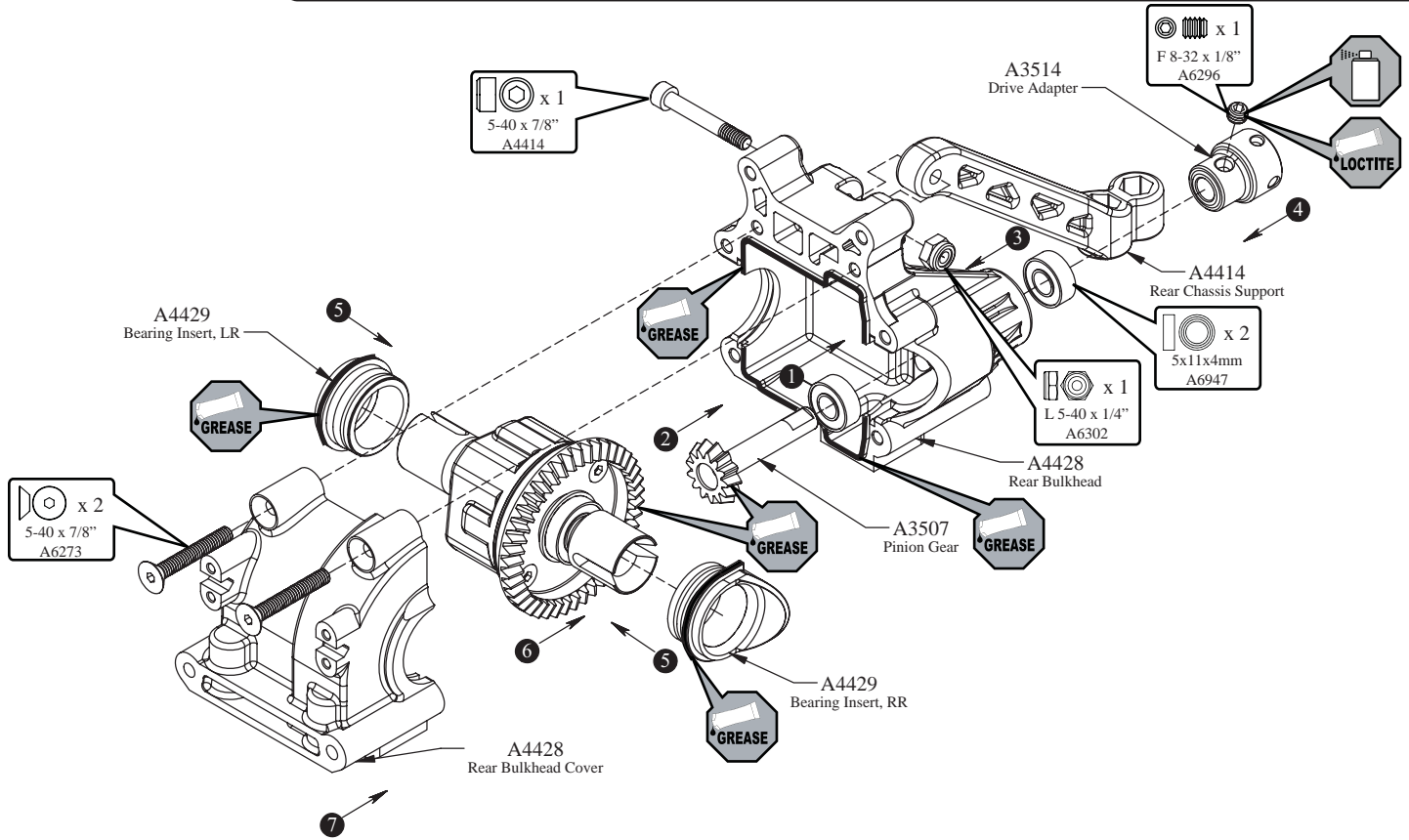
STEP D-02

Diff Case Assembly



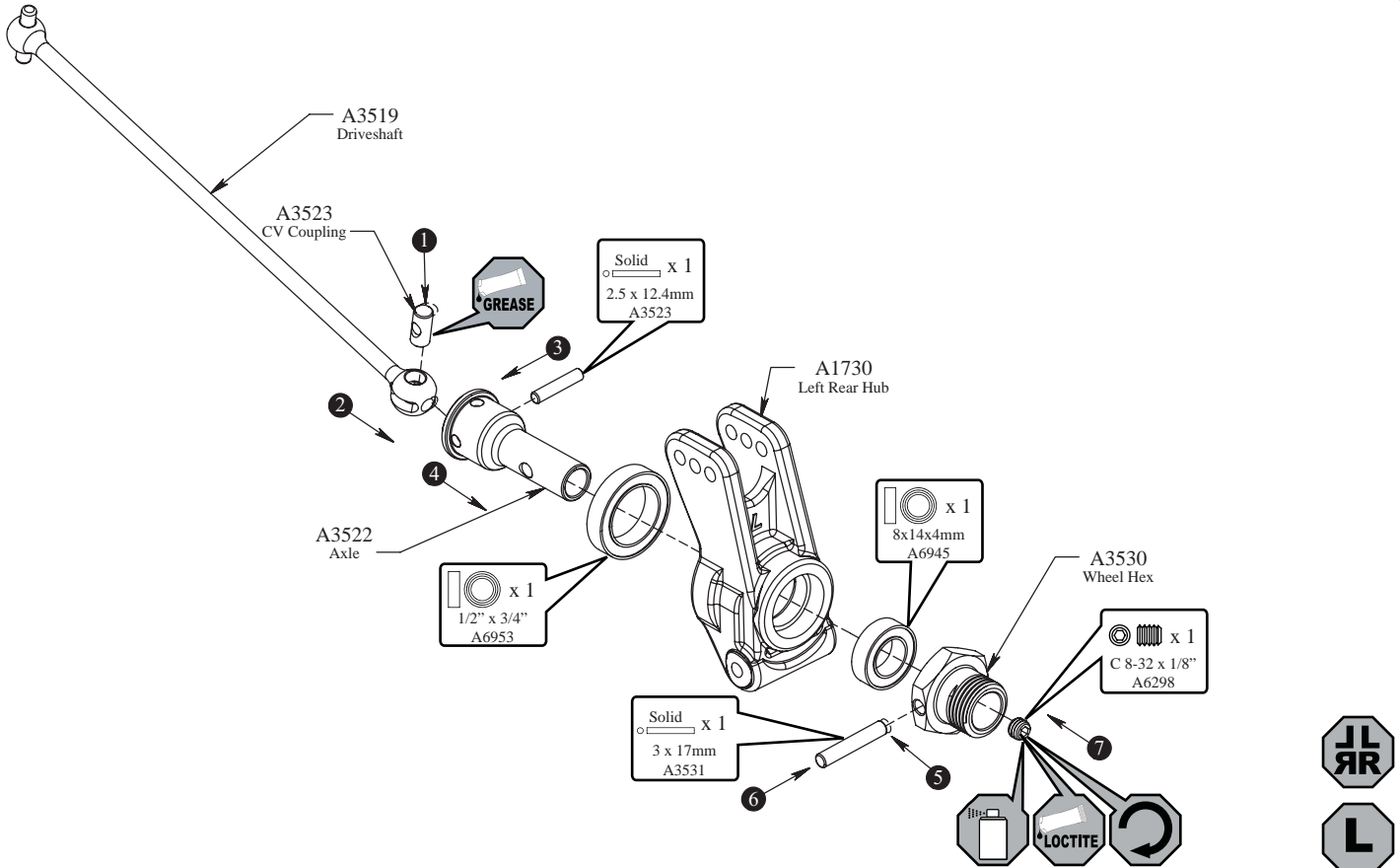
STEP D-04

Rear Diff Installation



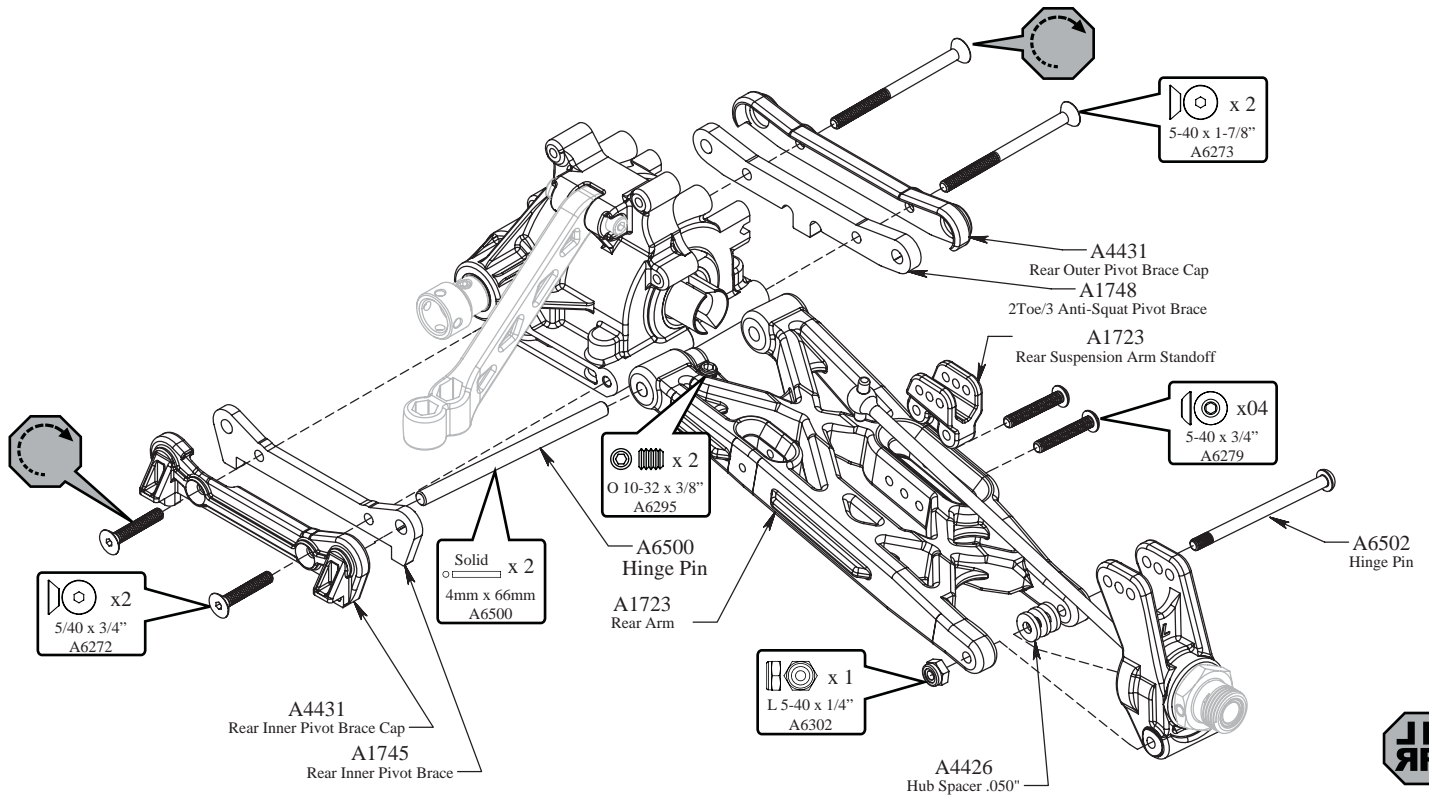
STEP D-05

Rear Hub & CV Assembly



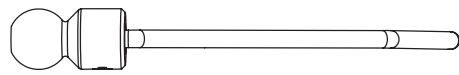
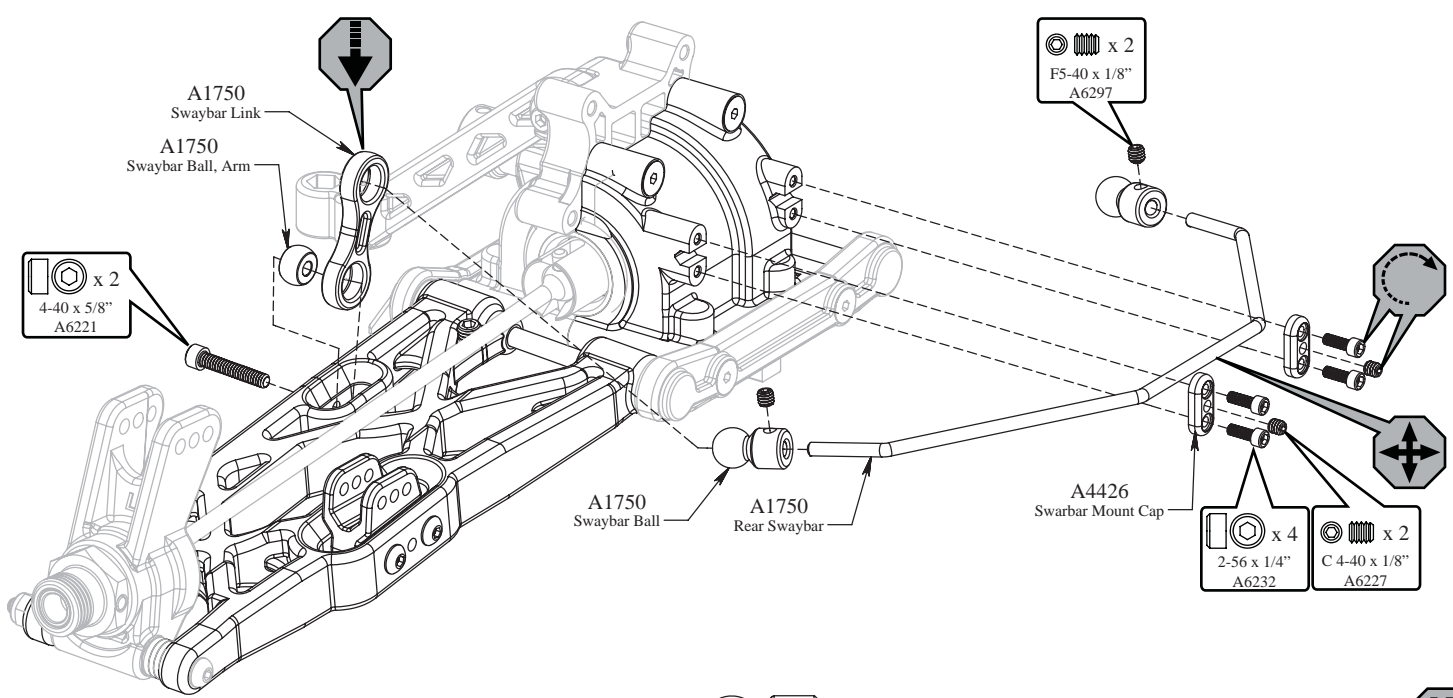
STEP D-06

Rear Suspension Arm Assembly



STEP D-07

Swaybar Assembly

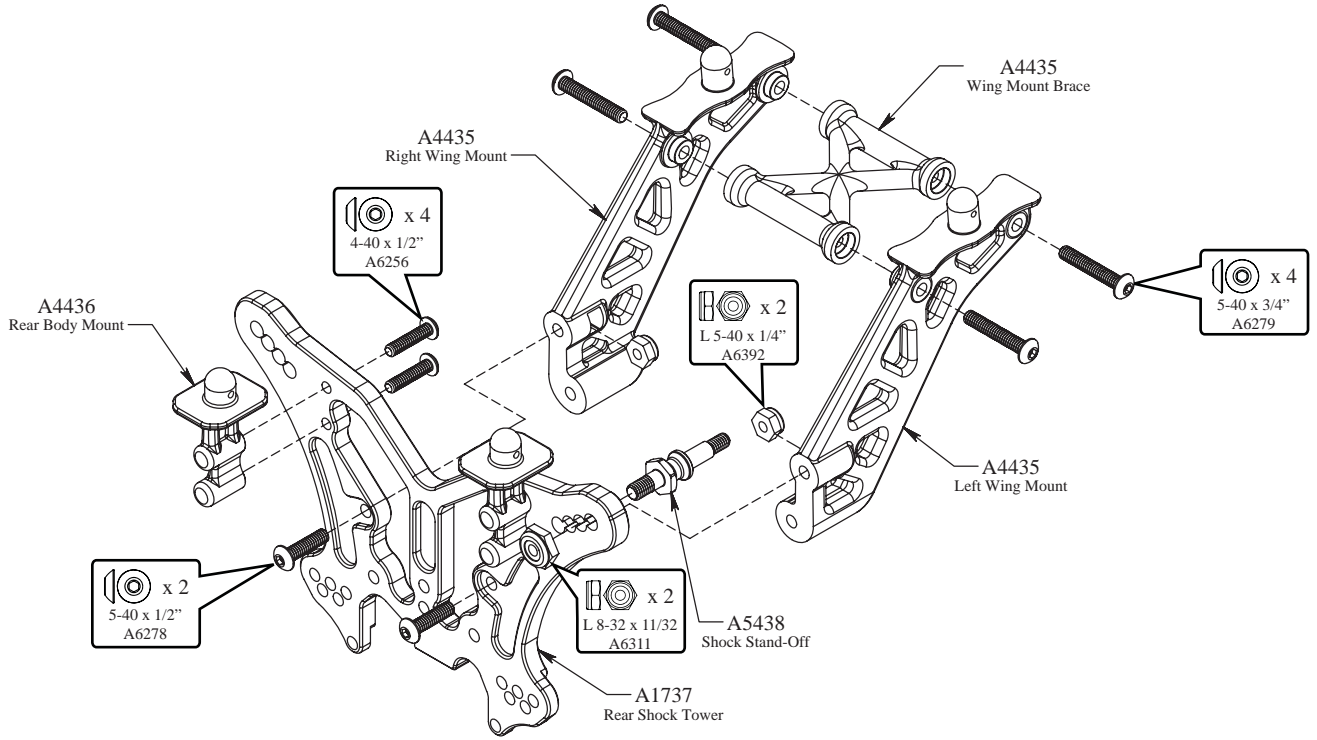


Install the Swaybar Ball onto the Swaybar Wire until the end of the wire is flush with the ball as pictured above



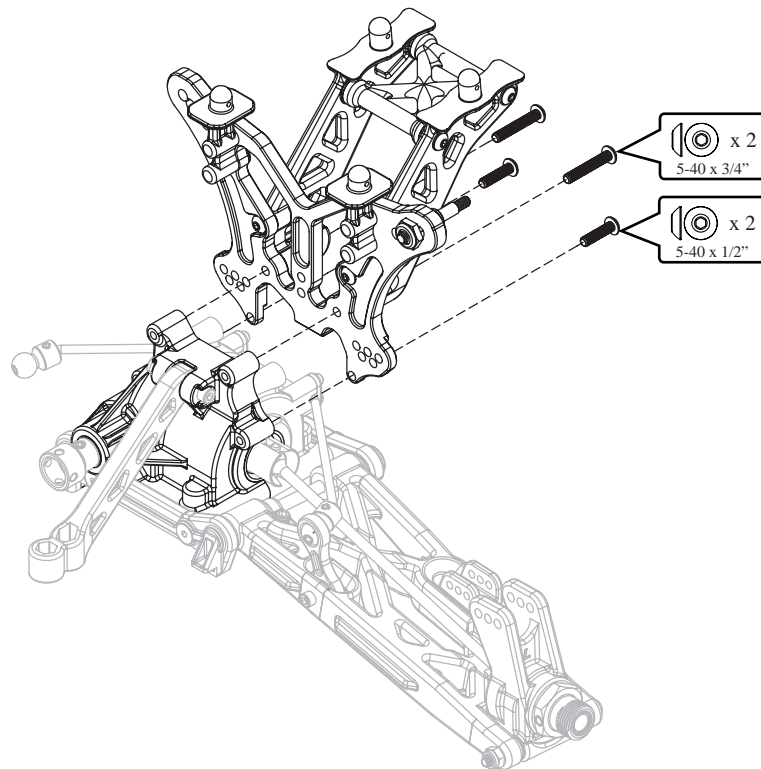
STEP D-08

Wing Mount Assembly



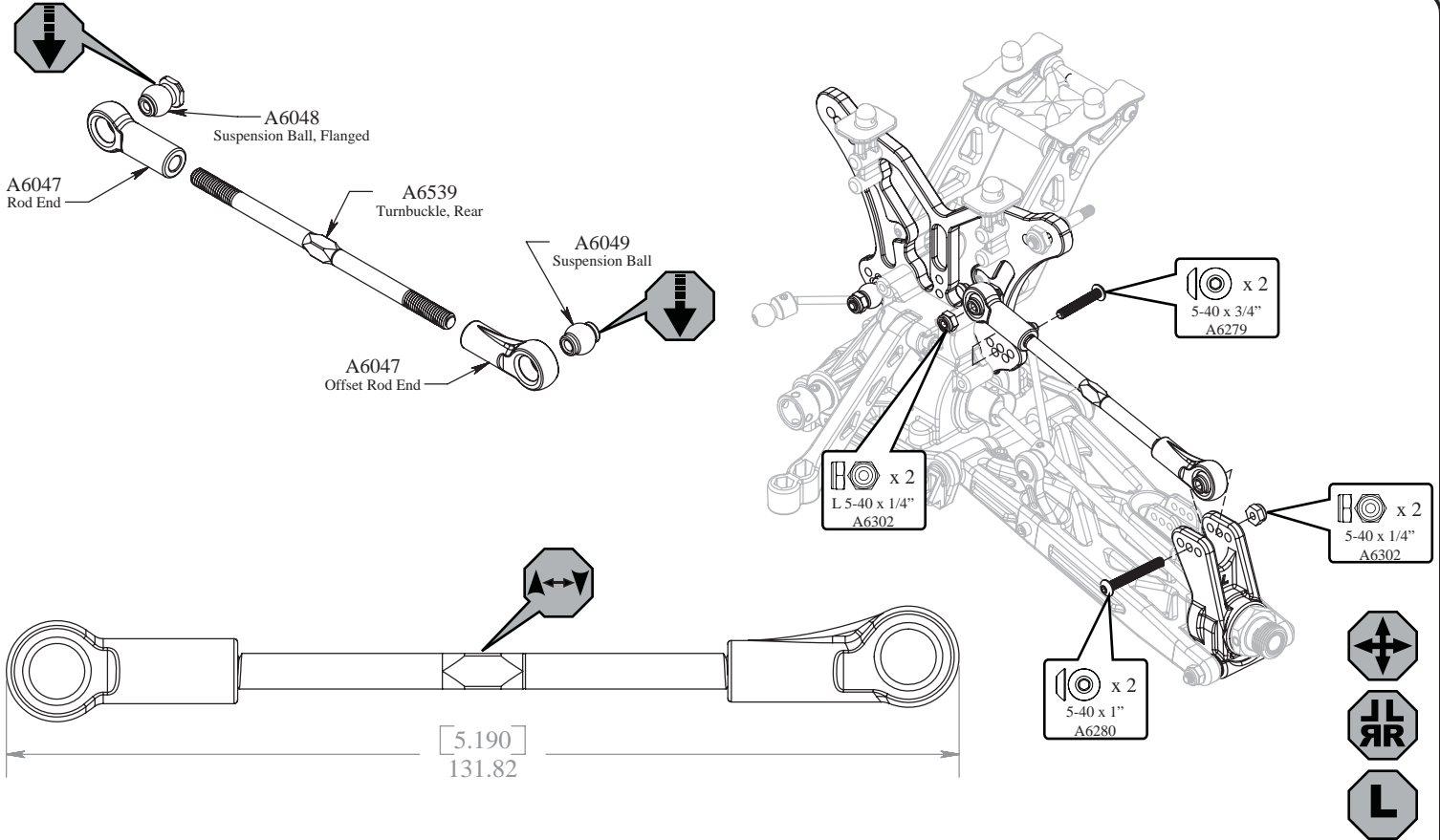
STEP D-09

Rear Shock Tower Installation



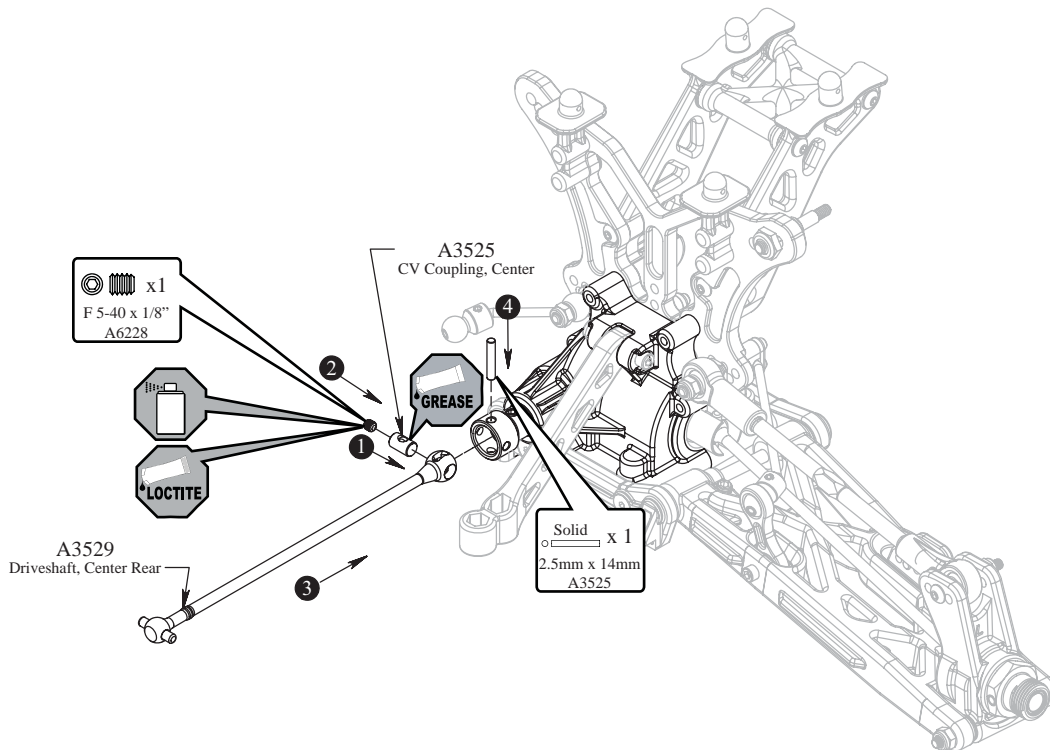
STEP D-10

Tie Rod Installation



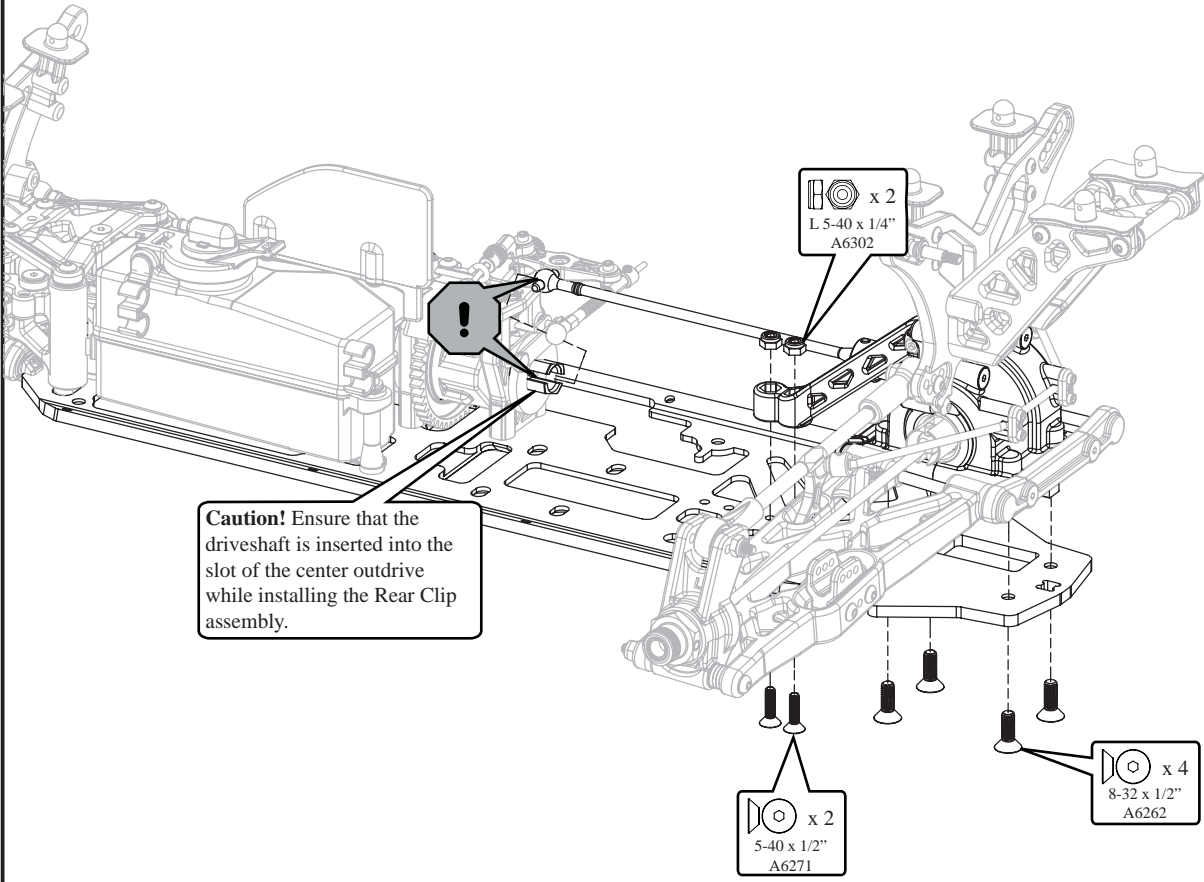
STEP D-11

Center CV Assembly



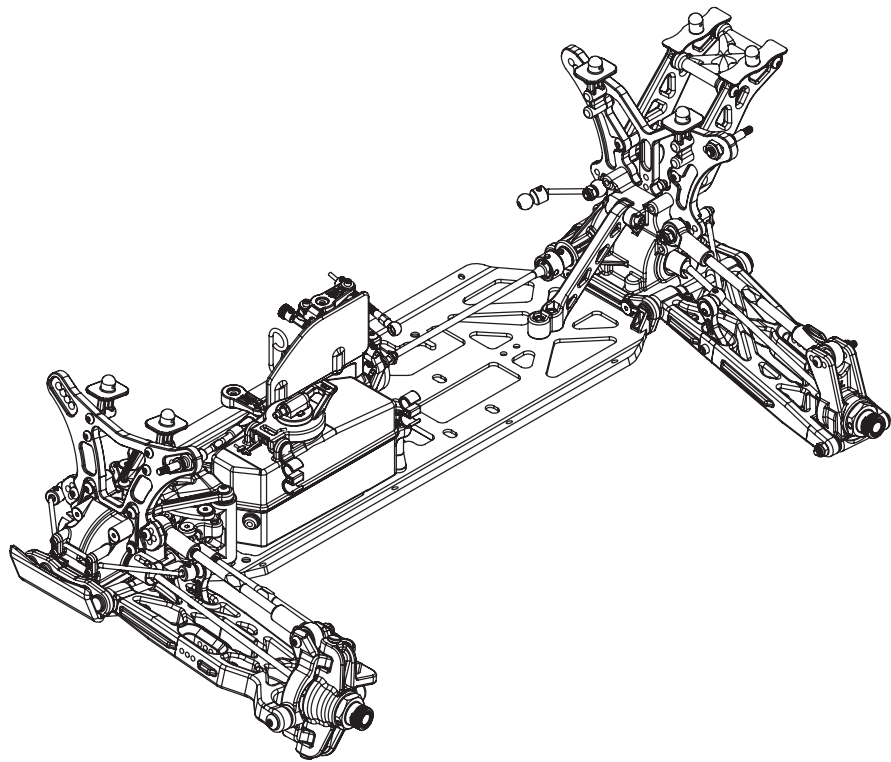
STEP D-12

Rear Clip Assembly



STEP D-13

Completed Rear Assembly

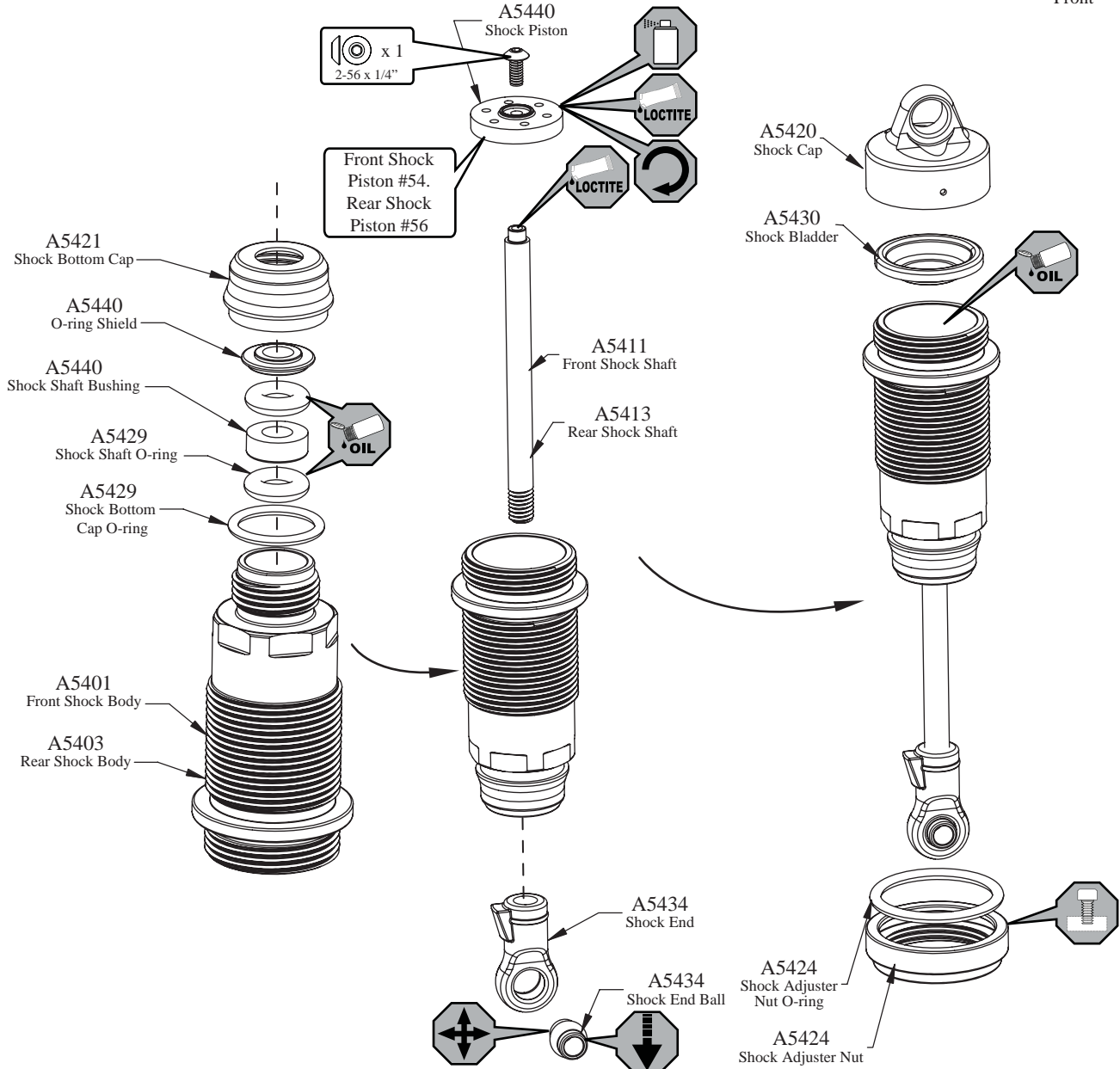


STEP E-01

Shock Assembly

- Clean the 2-56 x 1/4" Button Head Screw and apply loctite to the threads.
- Install the #54 Shock Pistons using the 2-56 x 1/4" Button Screw into the front Shock Shafts with a .050" Allen Wrench. Install the #56 Shock Pistons using the 2-56 x 1/4" Button Screw into the longer rear Shock Shafts with a .050" Allen Wrench.
- Place a drop of Shock Oil into the bottom of the Shock Body to lubricate the Shock Seals.
- Thread the Shock Shaft into the Shock end using pliers. Used caution when threading the Shock Shaft Ends onto the Shafts. Avoid gouging or scratching the Shock Shaft while gripping the Shock Shaft with pliers by placing the edge of a towel over the shaft, then gripping the portion of the Shaft covered by the towel. This method will work very well to protect the Shock Shafts from damage.
- Ensure the Shaft is fully extended when filling the shock.
- Fill the Shock Body with Shock Oil (Front 45wt/Rear 30wt) until the Oil is to the top of the Body.
- "Work" the Shock Shaft up and down a times. This will release the air bubbles trapped beneath the Piston. Place the filled Shock, in the upright position, off to the side for a few minutes until the air bubbles escape from the Oil.
- Once all the air bubbles are out of the Oil, gently place the Shock Bladder onto the Shock as shown. Some Oil should "bleed" from the Shock.
- Screw the Shock Cap onto the Body until some resistance is felt.
- Slowly push the Shock Shaft up. This will bleed excess Oil from the Shock.
- Tighten the cap all the way down using the shock tools included in your kit.
- Move the Shock Shaft up and down. The Shaft should be easy to push up into the Body of the Shock. If increased pressure is felt towards the top, there is too much oil in the Shock. Loosen the Shock Cap and "bleed" the Shock as done previously.
- Make sure each pair (front/rear) Shocks have the same rebound and compression. This is checked by holding one Shock in each hand horizontally and pushing them together by the Shock End. Watch carefully to ensure that both compress evenly. Now release both Shocks and again watch carefully as they should rebound the same.
- Install the Shock Adjustment Nut O-ring into the Shock Adjustment Nut before installing the Nut onto the Shock Body.

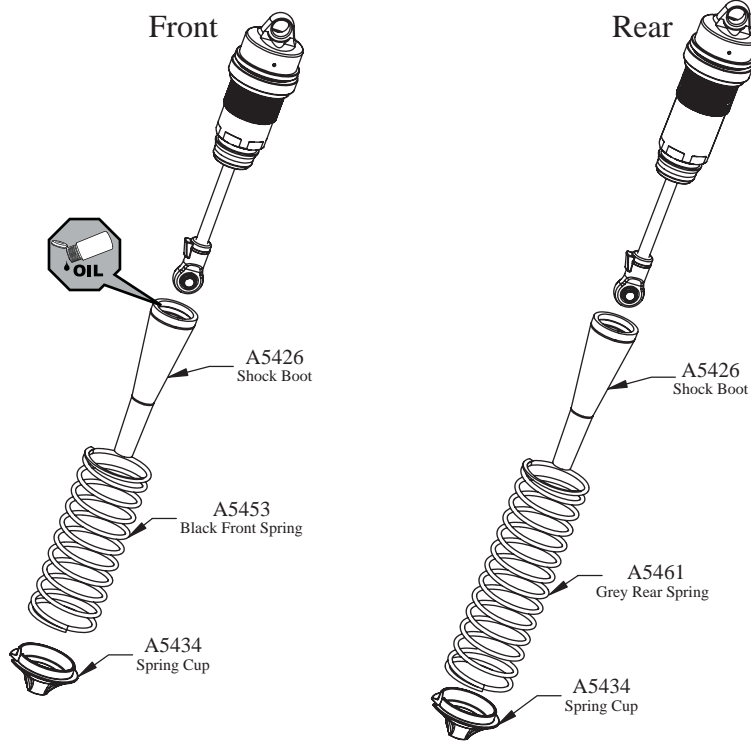
x2 Front x2 Rear



STEP E-02

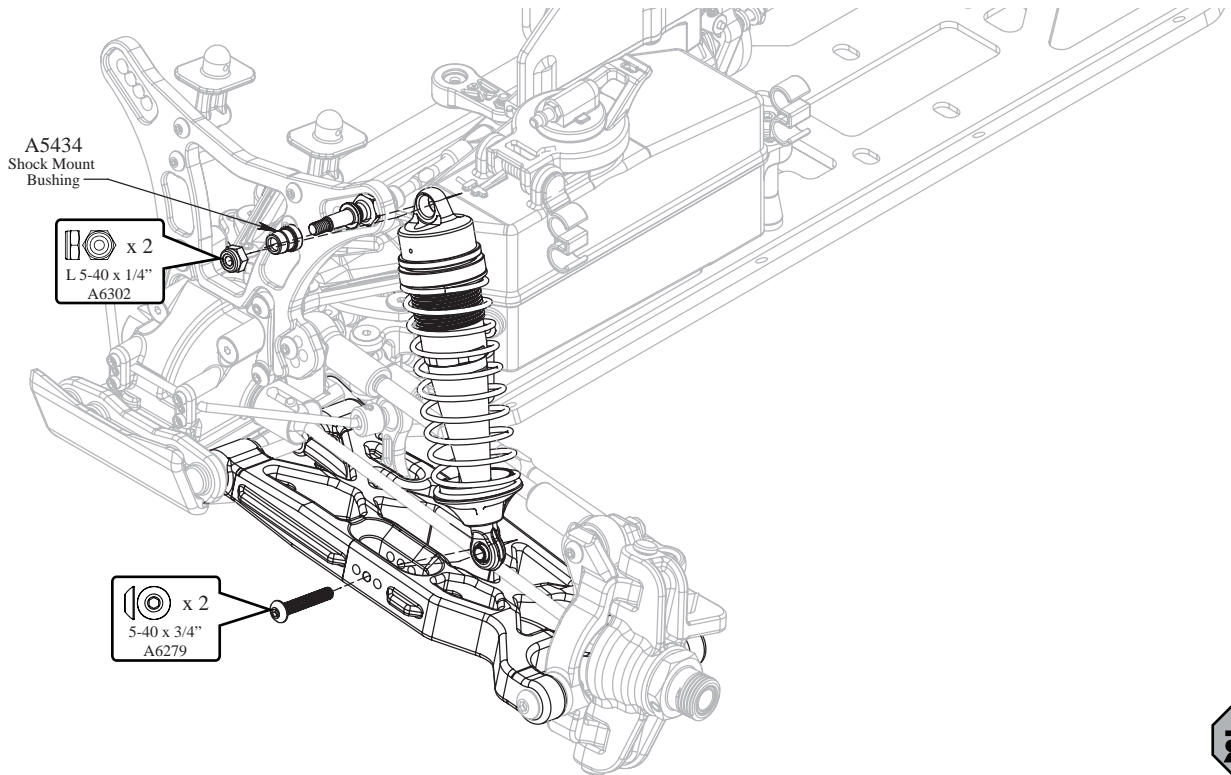
Shock Boot & Spring Assembly

x2 Front
x2 Rear



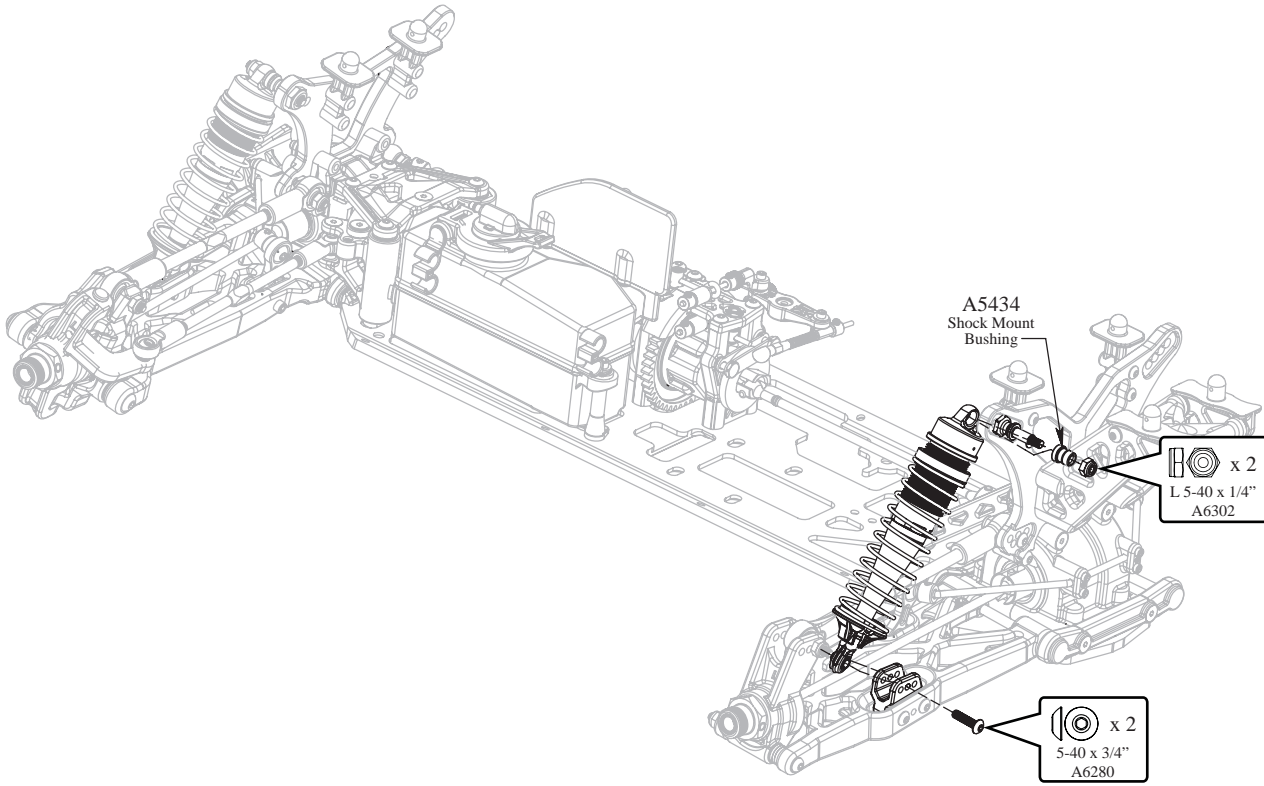
STEP E-03

Front Shock Installation



STEP E-04

Rear Shock Installation



STEP E-05

Completed Shock Assembly

